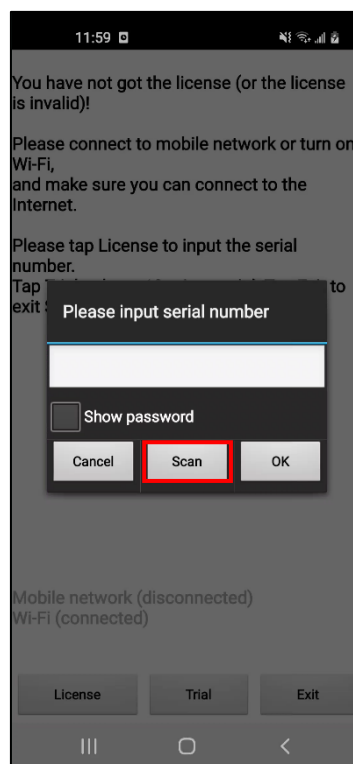


## What's new in SuperSurv 10.2a

202011

In the latest version, SuperSurv 10.2a, many useful tools have been added. And again, we improved the inconvenience of the users' experience. At the same time, we have also corrected many defects in the original function and data format support. The core concept allows users in all fields to use SuperSurv 10.2a more quickly. What's more, the considerate design on the authorization page allows users to save time, and get the authorization directly by scanning the QR code.

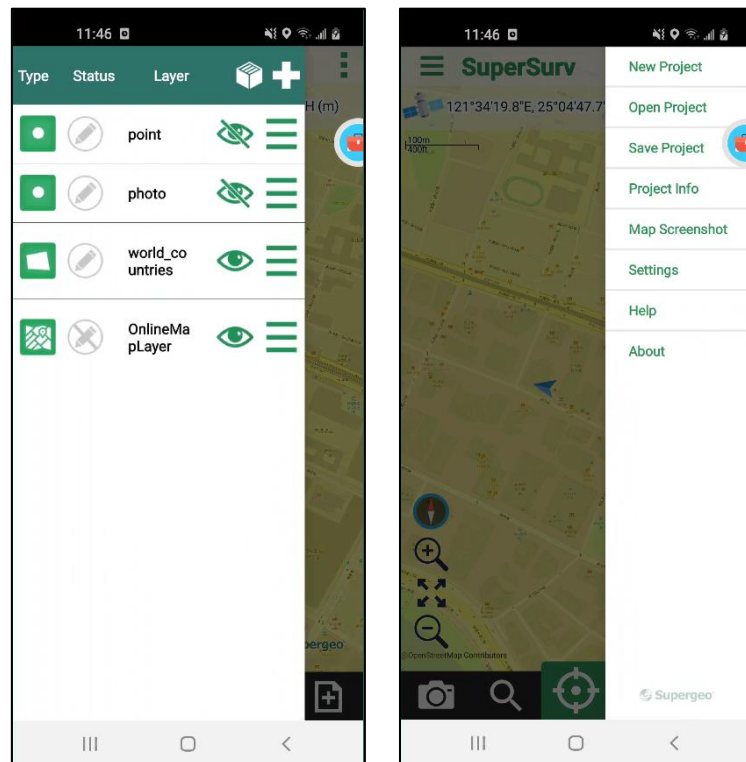


- ※ By adjustment of the authorization method, SuperSurv allows users to select the scanning method for quicker authorization.



## Friendly Operation Experience and Service

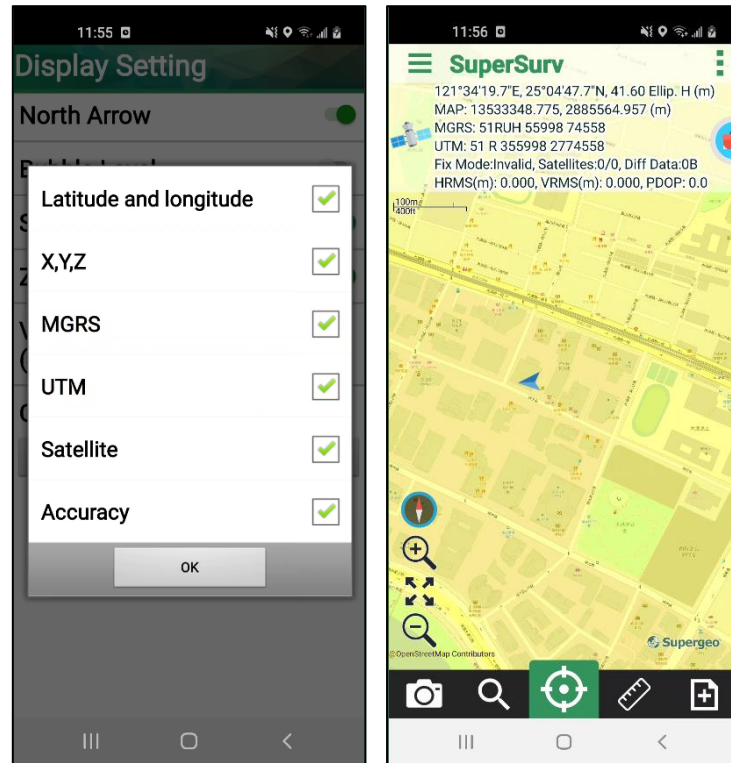
- Interface friendly storage design.
- On the left side, check the list of layer information.
- On the right side, view the setting list at any time.



※SuperSurv 10.2a allows users to get help and view data faster.

## Support Multiple Projection

- After selecting the coordinate system of the project, user can check the multiple coordinates in the status bar.
- Support the coordinate system of MGRS and UTM, helps a lot of users in the specific field.



※Multi-system coordinate system helps users in special fields to collect data.

## Adjustment of Operation System Support

- Support Android 7.0 and above