

Supergeo Webinar

Bring Field to Office by Smart Devices

Sep 18, 2014




Presenters

- ***Patty Chen***
Marketing Specialist
International Marketing Division
- ***Danny Wang***
Tech Support Engineer
GIS Training & Support Center
- ***Supergeo Support Team***

Product Roadmap

SuperGIS Products



Server GIS

- SuperGIS Server
- SuperGIS 3D Earth Server
- SuperGIS Network Server
- SuperWebGIS

Cloud GIS

- SuperGIS Online
- Data Services
- Address Locator
- Excel Add-in
- Statistical API

Desktop GIS

- SuperGIS Desktop
- Spatial
- 3D
- Network
- 67-97 CTS (TW only)
- CCTS (TW only)
- Spatial Statistical
- Biodiversity
- Topology

Mobile GIS

- SuperGIS Mobile Engine
- SuperPad
- SuperField
- SuperSurv (Android/iOS)
- SupervoyOT (Hardware bundle)

Developer GIS

- SuperGIS Engine
- SuperNetObjects
- Network
- Biodiversity
- Spatial Statistical
- Spatial
- 3D

Solution

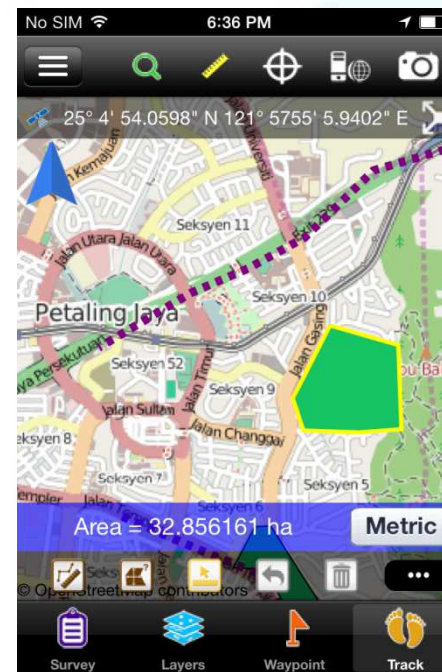
- SuperGIS Mobile Tour (Android)
- Mobile Cadastral GIS (TW only)

Bring Field to Office by Smart Devices

Position of SuperSurv

- A GIS data collection app specially designed for Android and iOS platform
- Integrating with GIS and GPS technologies
- Easily capturing and handling spatial data in the field

iOS



Overview of SuperSurv

- Efficiently collect point, line, polygon data
- Support **offline & online editing**
- Display map data with **global coordinate system**
- Create and manage **waypoints**
- Query and measure on the map
- Fully compatible with other SuperGIS product lines

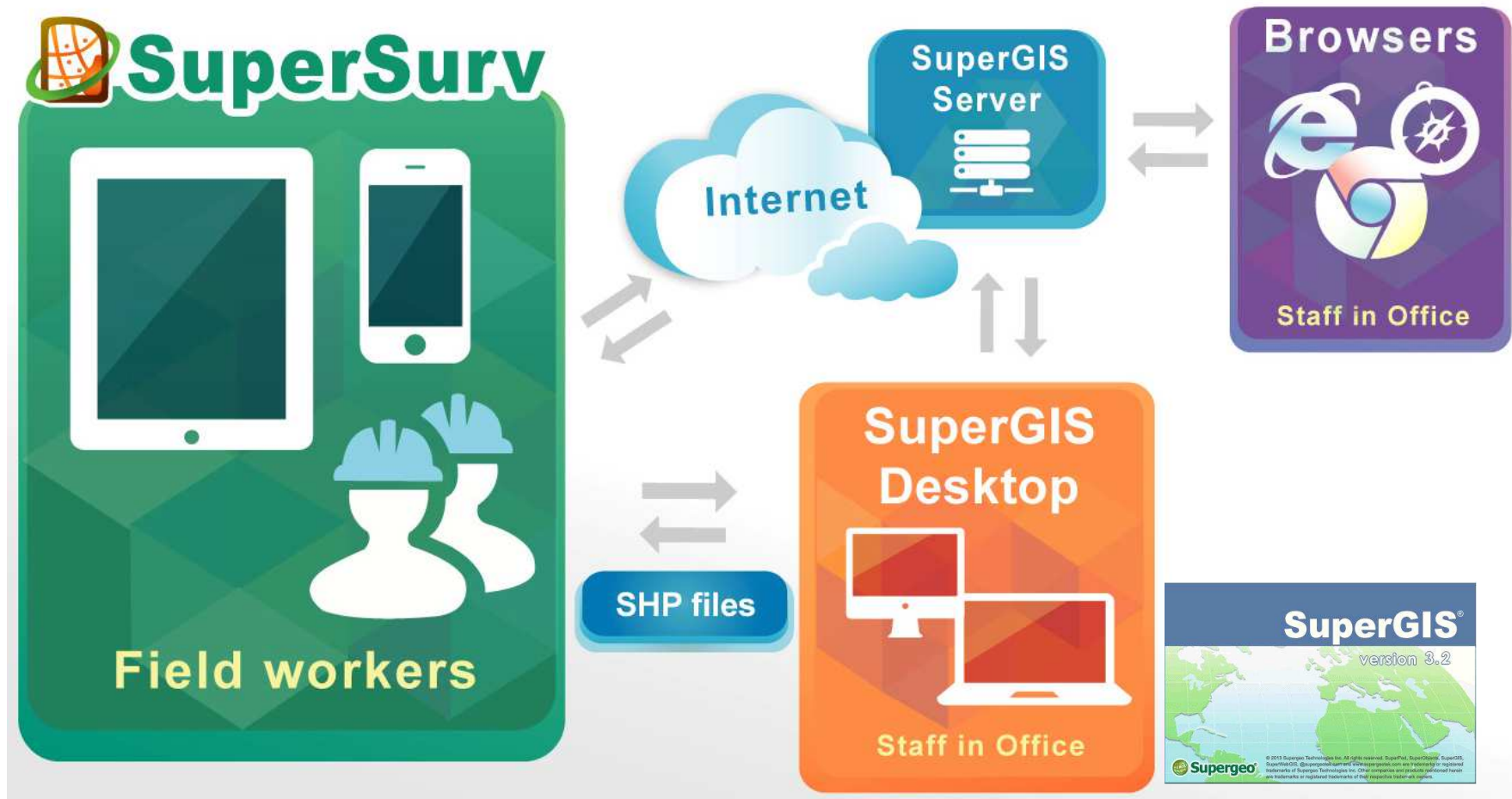


What's New in SuperSurv 3.2

- Query Function
 - **Hyperlinks**
 - **Query window enlarged**
- GPS Function
 - **Display the Z value of GPS**
 - **GPS track length**
- Waypoint Management
 - **Easily managing waypoints**
- Map Display
 - **Defined scale**
 - **Label features**

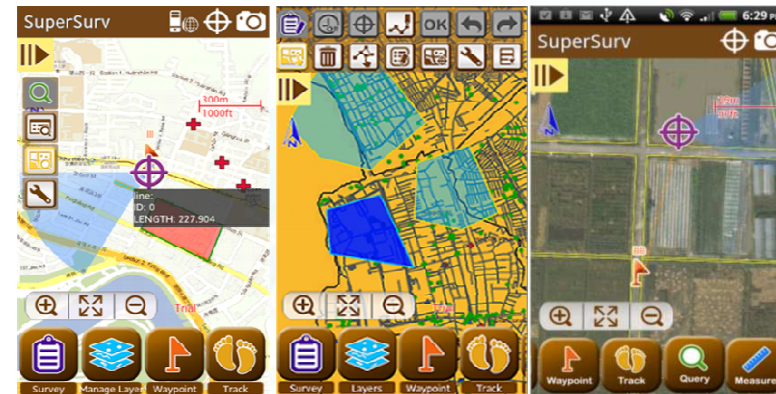


Overview of SuperSurv



Supported Spec and OS

- Vector data: SHP, GEO
- Raster data: SGT, STC
- GPS track: SHP, KML
- Waypoint: TXT, CSV, KML

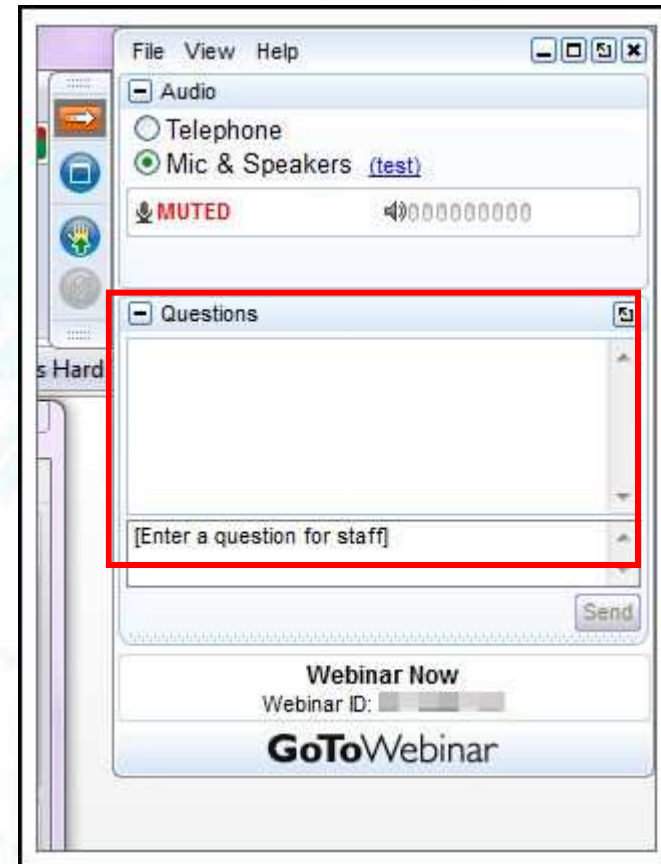


- **OS: Android 4 above**
iOS 6 above



Questions & Comments

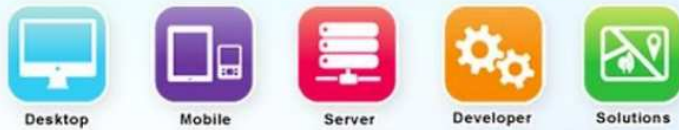
- During the presentation, you may share your comments or questions
- Or, you may drop us an email to:
staff@supergeotek.com
- Follow us on Twitter 
[@Supergeotek](https://twitter.com/Supergeotek)





Powerful, Affordable, Reliable

Your Superior GIS Software Choice



Supergeo[®]

Supergeo
@SupergeoTek

Leading global provider of GIS software, providing GIS users and developers with complete GIS solutions.

Taiwan
supergeotek.com
Joined June 2010

TWEETS 733 PHOTOS/VIDEOS 22 FOLLOWING 294 FOLLOWERS 374 FAVOURITES 31 More

Edit profile

Tweets Tweets & replies

 **Supergeo** @SupergeoTek · Aug 29
Forest Inventory App will be released soon, check out to learn more!
goo.gl/3SYWHb
pic.twitter.com/O42QJx0ICM

Who to follow · Refresh · View all

-  **21CC** @21CC
Follow
-  **British Exploring** @Brit_explo.

FOLLOW US ON
twitter
@SupergeoTek

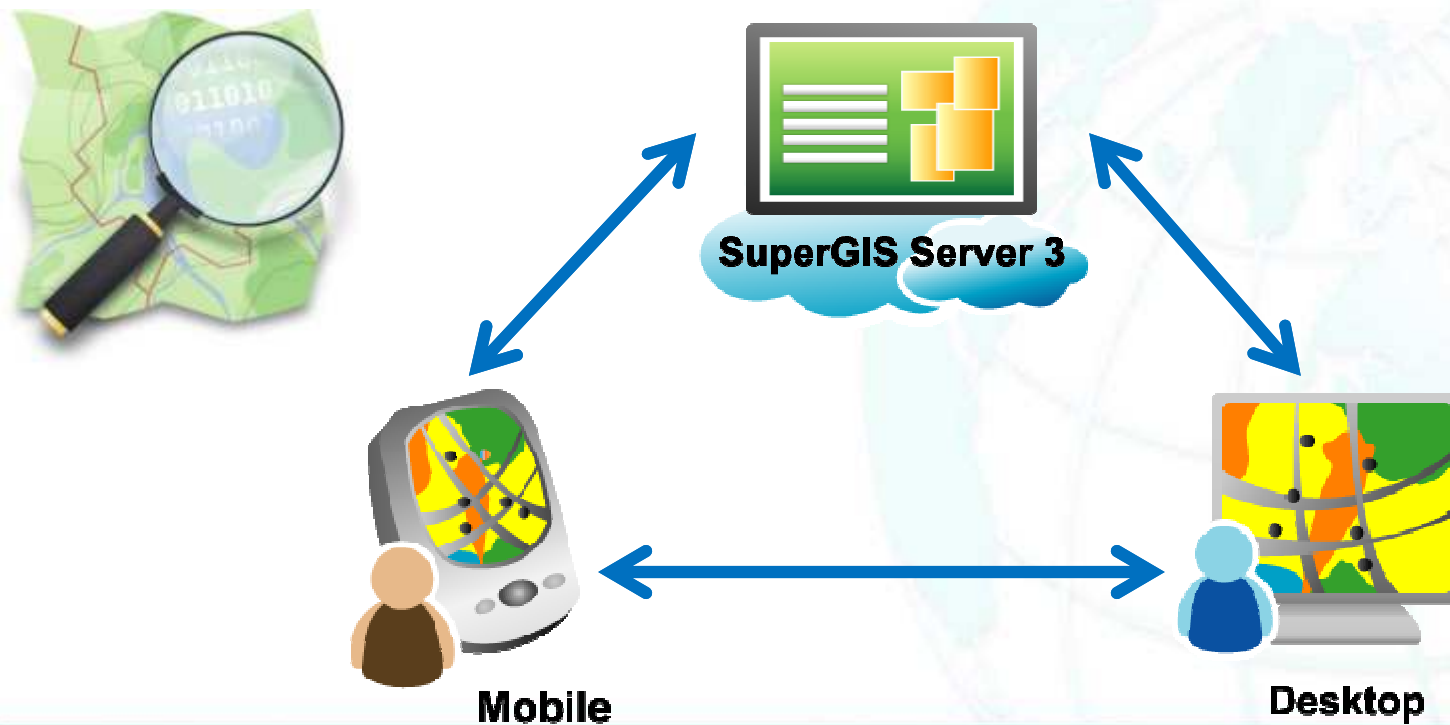
@SupergeoTek

Agenda

- **In this webinar, we'll go through:**
 - Survey and update cadastral data with smart GIS solutions
 - Capture field data by ready-to-go work flows
 - Fast and easy data editing for efficient facility management
 - Convenient data exportation and arrangement in office
 - Plan for better future - advanced data analysis and report

Mobile GIS Application

- A lightweight GIS system on your mobile devices
- Specifically designed for **field works**



Live Demonstration

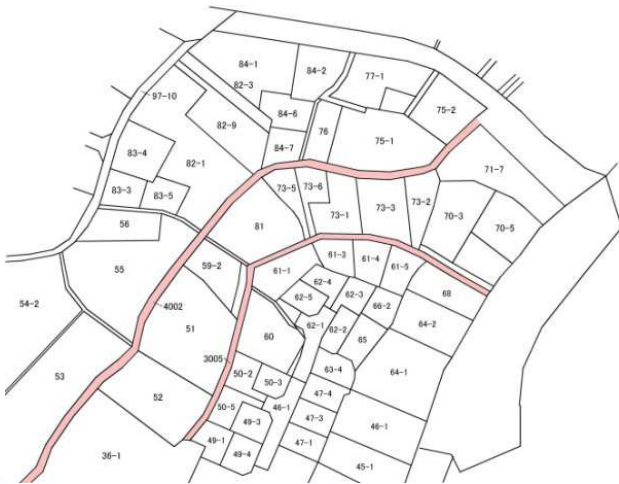
Cadastral data maintenance and survey



Cadastral Field Survey

- **Scenario**

- The cadastral data of the residential area need to be updated with the latest land use and change.
- Customers may have some issues with the land border and need to be checked by officers.



In the Old Ways...

- **The cadastral survey means:**
 - Loads of geodetics equipment
 - Huge use of manpower
 - Annoying paper works with the results
 - Always fighting with the accuracy
 - Cadastral data on paper



Latest Cadastral Field Survey

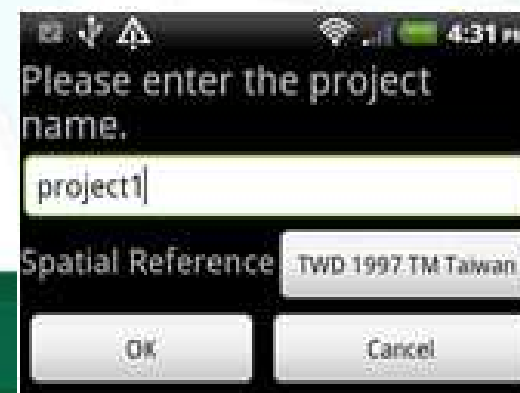
- **A survey project with modern techs**
 - Customized coordinate systems
 - Cached Map, online map and layers
 - Quick information and metadata query
 - On-screen measurement
 - Spatial guiding system



#01 Start With SuperSurv

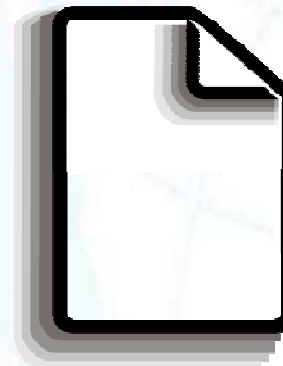
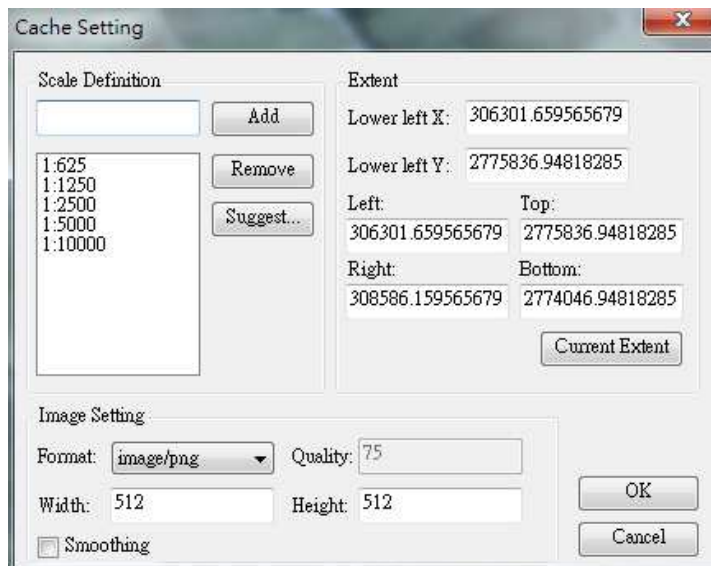
- **Setting Project**

- **Creating a project environment** before the survey is very important
 - ✓ All data and media will be stored within your project folder
- To decide the spatial reference system and the purpose of your project, you may create:
 - ✓ **New Project** with localized spatial reference
 - ✓ **Online Map Tool Project** with OpenStreetMap

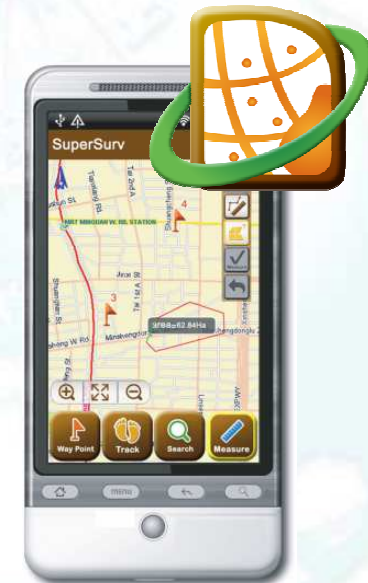


#02 Preparation before survey

- **Basemap preparation for survey**
 - **STC** and **SGT** Map Cache File supported
 - Create your own basemap by **SuperGIS Desktop Cache Generator**

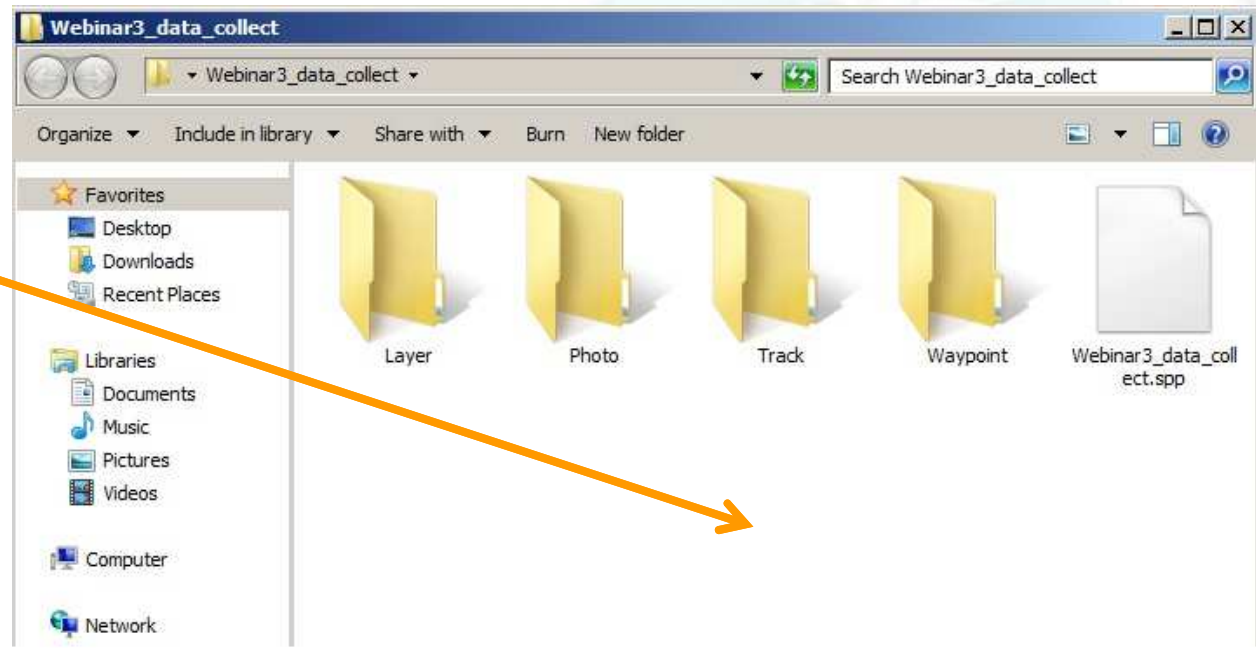
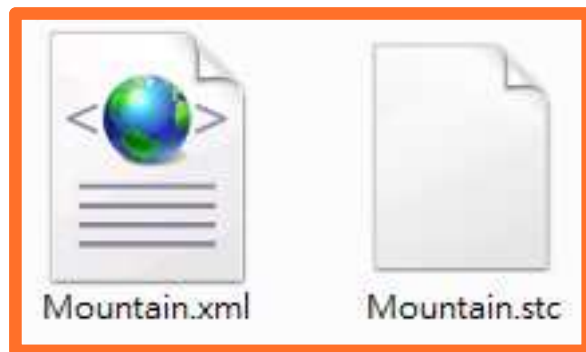


STC or SGT
Base Map



#02 Preparation before survey

- **Base map preparation**



Drag and drop your basemap
in the directory of Project

#02 Preparation before survey

- **Bring in the GIS data**

- All the layer files should be stored in the “**Layer**” folder within the project
- Both **GEO** and **SHP** file format are supported
- Simply just drag in all the layers you need for the survey to the **Layer** folder



#02 Preparation before survey

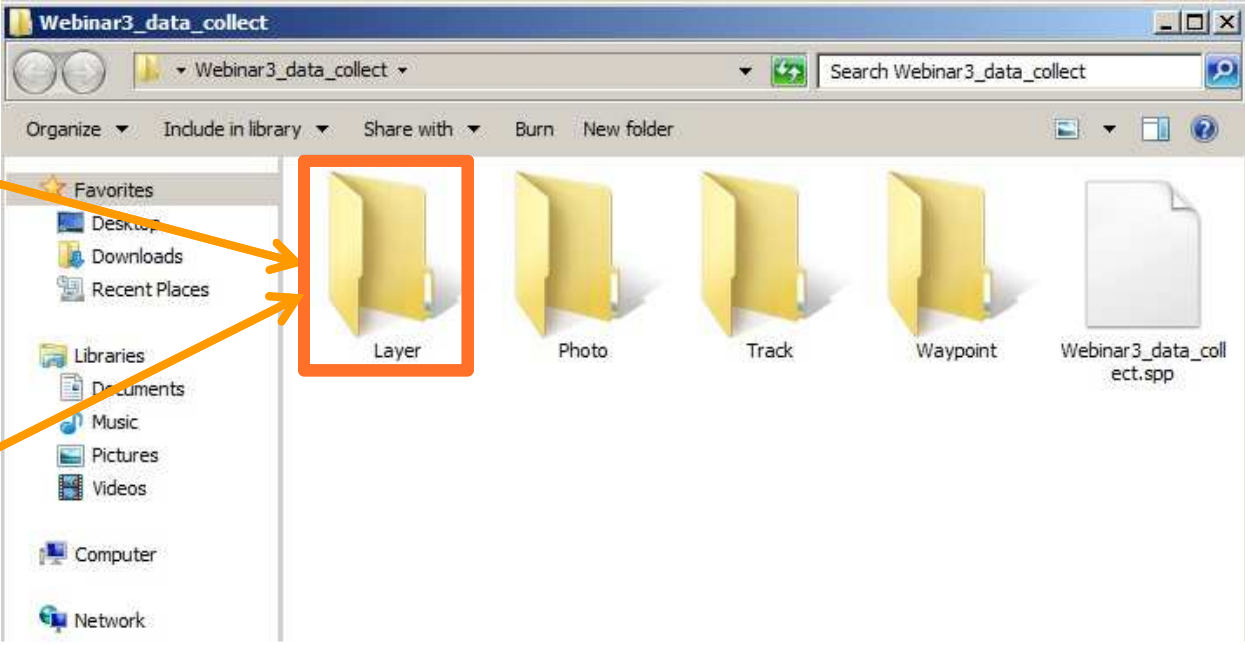
- **Bring in the GIS data**

SHP

- Spotting.cpg
- Spotting.dbf
- Spotting.prj
- Spotting.shp
- Spotting.shx

GEO

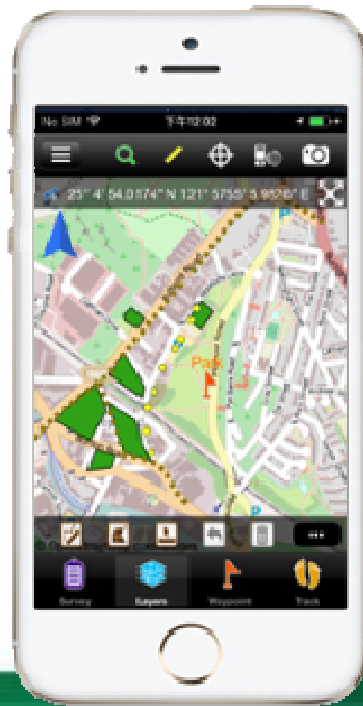
- TestZone.cpg
- TestZone.dbf
- TestZone.geo
- TestZone.prj



Drag and drop your layers file in the Layer folder within project

#02 Preparation before survey

- **If you are using iOS version**
 - Import / Export the data by iTunes or Dropbox
 - Photos can also be exported to your photo library



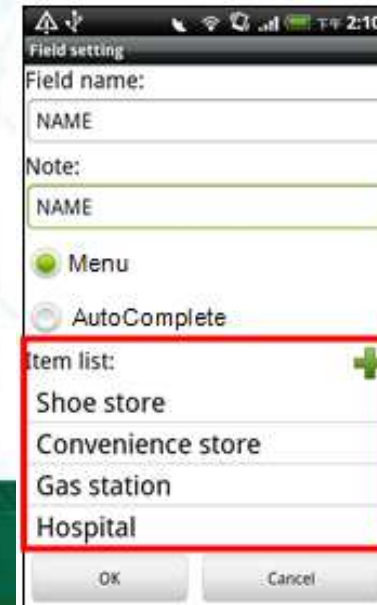
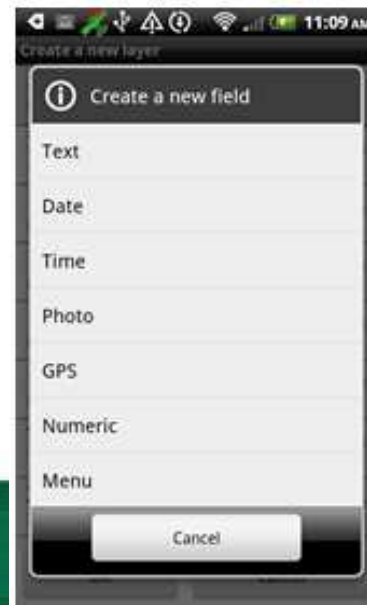
#02 Preparation before survey

- **Layer Creation and Management**

- SuperSurv allows user to create **point, line and polygon** layers
 - ✓ .geo or .shp format with customized code pages
- Changeable **symbology** and **layer order**

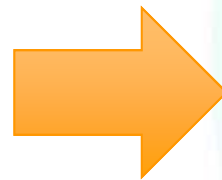
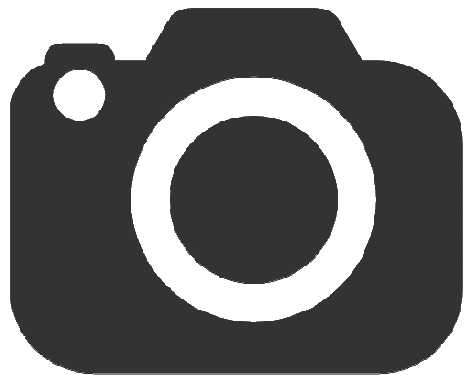
- **Customization of Attribute table**

- Manage and customize the attribute table easily



#02 Preparation before survey

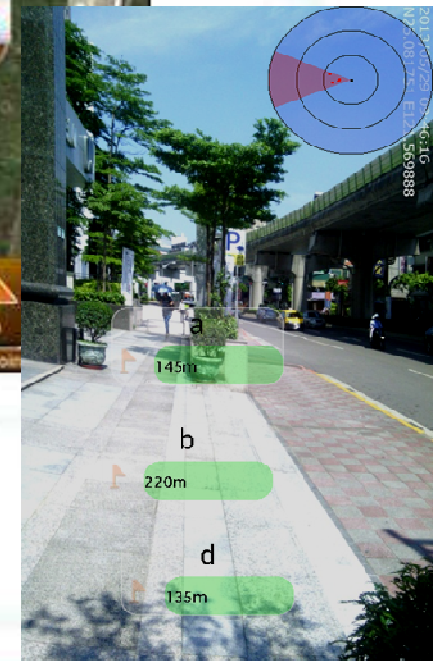
- **Take photos with camera in field survey**
 - Capture the photo of environment at or around spots
 - Record coordinate information to EXIF information of the photo



#02 Preparation before survey

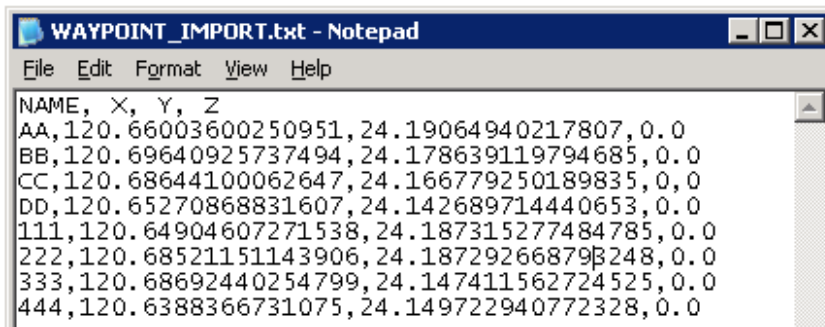
- **Ways to your destination**

- **Waypoint system**
 - ✓ Manually tapping
 - ✓ Add by GPS
 - ✓ Import waypoints from files
- Pan to the specific waypoint
- Waypoint guidance
- Augmented Reality (AR)



#02 Preparation before survey

- **Prepare waypoints as your guide**
 - Manually tapping
 - Import waypoints file
 - ✓ TXT, CSV or KML



```
WAYPOINT_IMPORT.txt - Notepad
File Edit Format View Help
NAME, X, Y, Z
AA,120.66003600250951,24.19064940217807,0.0
BB,120.69640925737494,24.178639119794685,0.0
CC,120.68644100062647,24.166779250189835,0.0
DD,120.65270868831607,24.142689714440653,0.0
111,120.64904607271538,24.187315277484785,0.0
222,120.68521151143906,24.187292668793248,0.0
333,120.68692440254799,24.147411562724525,0.0
444,120.6388366731075,24.149722940772328,0.0
```



Waypoint

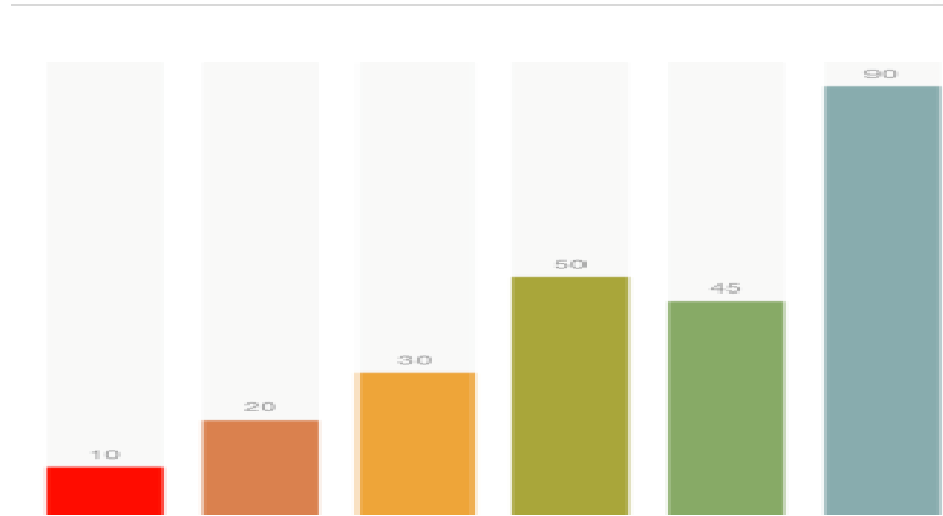


#02 Preparation before survey

- **Demonstration**

- Build up a project for survey
- Bring in the basemap and layer files
- Quick management of the layer data
- Setup waypoints for spatial guidance





BREAKTIME: QUICK POLL

You **Tube**

SupergeoTV

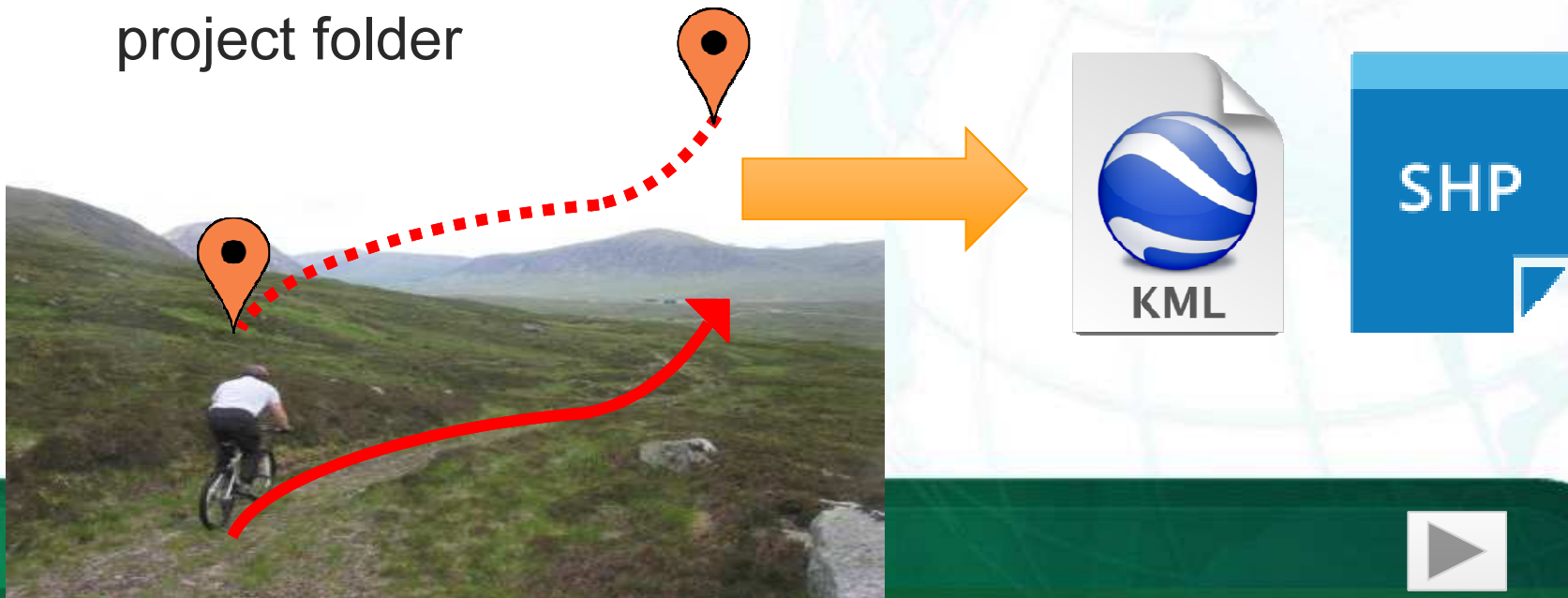
 SuperSurv

Win free SuperSurv !!

#03 On-field Survey

- **Track recording for your report**

- Track Recording function
- Record the track of GPS and save as point layer (KML) and line layer (SHP)
- The file can be found in the Track folder within the project folder



#03 On-field Survey

- **Data collection with GIS & Survey tools**
 - Switchable layers within project for editing and modification
 - Automatic feature collection via GPS, or manually input the vertex one by one.

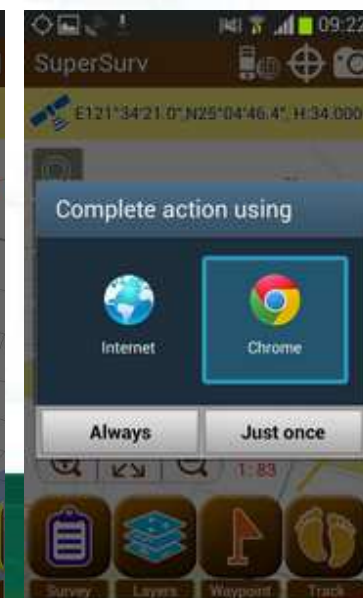
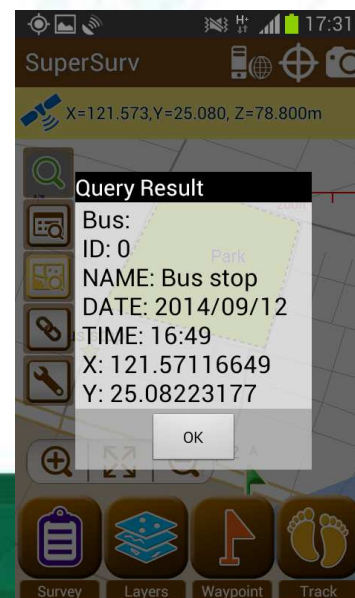


Enter attributes	
ID:	<input type="text" value="10"/>
NAME:	<input type="text" value="AAA"/>
MEMO:	<input type="text" value="A's bike route"/>
PHOTO:	<input type="text"/>
DATE:	<input type="text" value="2012/02/04"/>
TIME:	<input type="text" value="10:40"/>
LENGTH:	<input type="text" value="552.1769023223294"/>
<input type="button" value="OK"/> <input type="button" value="Cancel"/>	



#03 On-field Survey

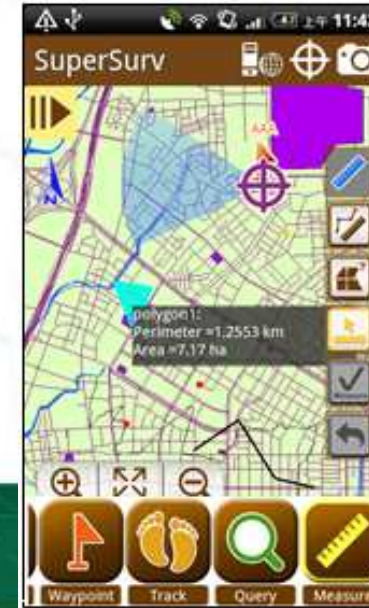
- **Quick data query tools in SuperSurv**
 - Attribute Query
 - Identify Query
 - **Hyperlink Query** → **New Feature in 3.2!!**
 - Query Settings allow user to perform more precise and efficient on-screen query

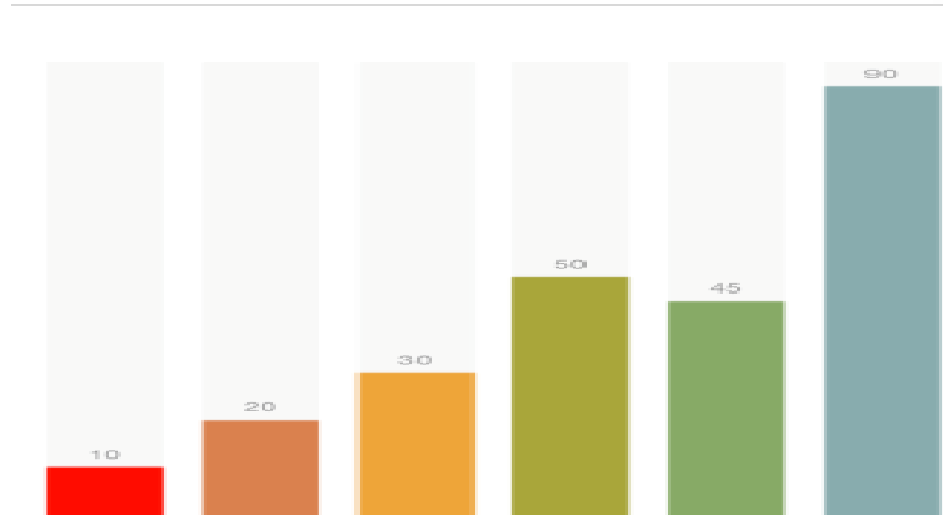


#03 On-field Survey

- **Measurement tools in SuperSurv**

- **Length** Measurement
- **Area** Measurement
- **Feature** Measurement
- Switchable metric units and imperial units





BREAKTIME: QUICK POLL

You **Tube**

SupergeoTV

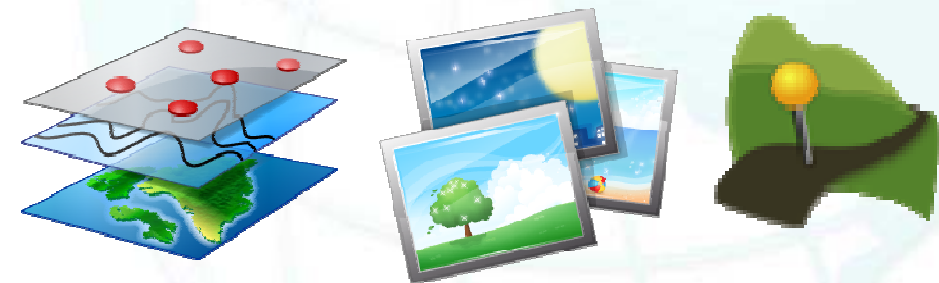
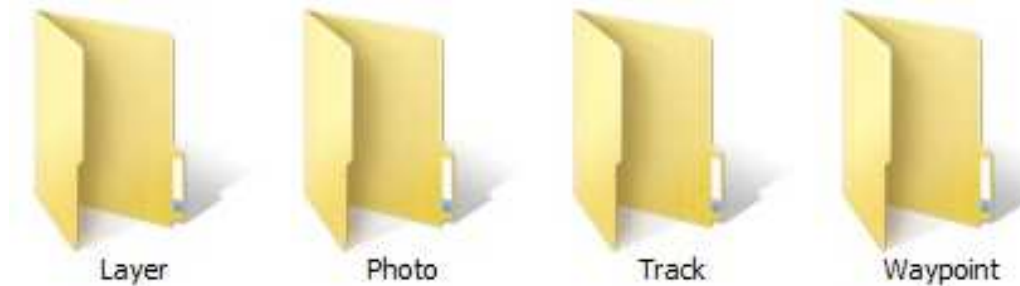
 SuperSurv

Win free SuperSurv !!

#04 Office Operation

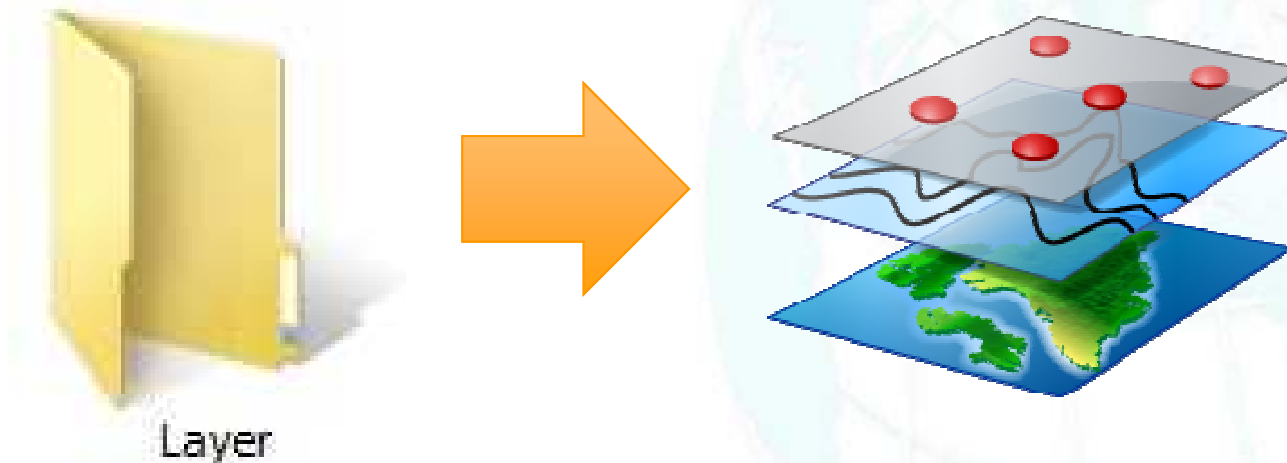
- **Export your survey data**

- Export the survey project folder to PC
- No complicated steps but just drag and drop



#04 Office Operation

- **Export your survey data**
 - All the layers is still within the Layer folder
 - Take out layers and check with GIS Software



#04 Office Operation

- **Export your survey data**

- The tracklog has been saved as both KML and Shape file format, and you can find them in the Track folder



#04 Office Operation

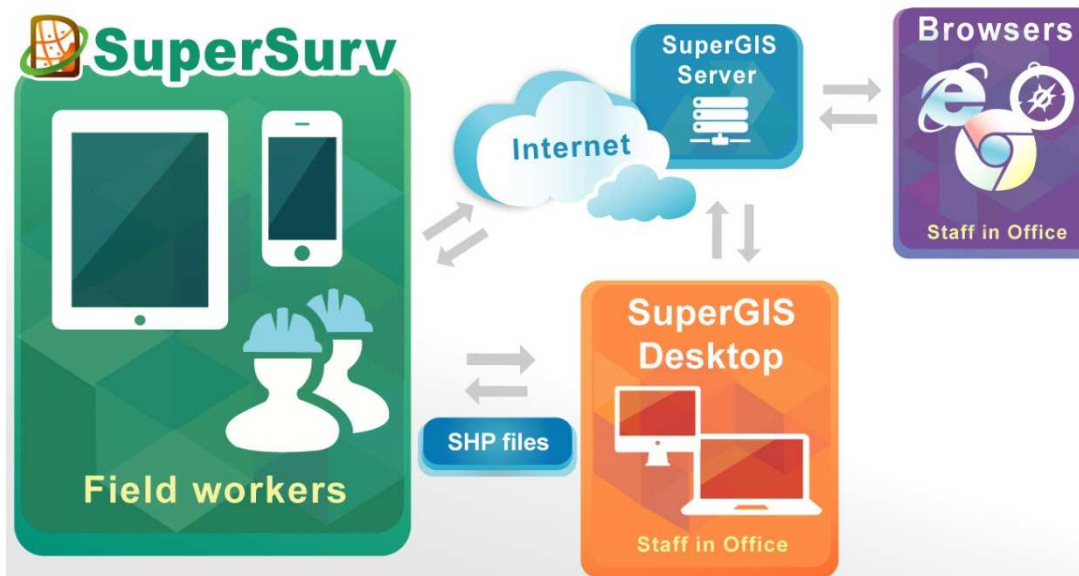
- **Export your survey data**
 - All the Photos within project are saved in the Photo folder, so you may export them for further usage



#04 Office Operation

- **Field survey data application**

- All the data collected by mobile device is also good for later use with different platforms
- Fully compatible with further analysis and statistics



#04 Office Operation

- **Demonstration**



- Back in the office with survey data
- Export project folder from device
- Check the survey data and tracklogs with SuperGIS Desktop



Reviews

- Easy-to-prepare survey project and information before field works
- On-field survey and update cadastral data with smart GIS solutions
- Convenient data exportation and arrangement back in the office
- **Plan for better future** - advanced data usage for analysis and suggestion

2 editions to fit your needs:

	SuperSurv 	SuperSurv M3 
Vector data (GEO, SHP) support	X	X
Offline data display and edit	X	X
GPS and e-compass	X	X
GPS track record (KML, SHP)	X	X
Length, area, and feature measurement	X	X
Global coordinate system support	X	X
Waypoint management	X	X
OpenStreetMap as basemap	X	X
Identify and attribute Query	X	X
Display SuperGIS Server map service	X	X
Edit and synchronize SuperGIS Server service	X	

- **Free trial** of both SuperSurv and SuperSurv M3 is available on App Store, Google play and Supergeo website.
- **Full-function: 7 days**

Get Free Trial



Upcoming Events

Supergeo Webinars

- October 29 – targeting at SuperGIS Sever
- November – targeting at 3D GIS

Exhibitions

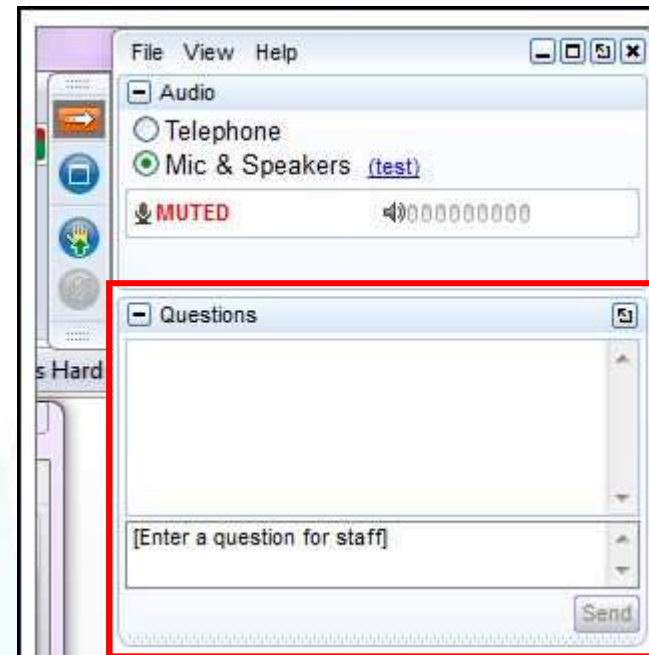
- October 7-9, INTERGEO 2014, Berlin, Germany

Booth A3.033

Hall 3.1



Q&A Time



Subscribe to get latest Online Training Resources



<http://www.supergeotek.com>

staff@supergeotek.com



Win FREE SuperSurv



SuperSurv

4 hours ago · Edited

[Webinar Event] LIKE us to win a FREE SuperSurv!


1. LIKE SuperSurv Facebook Fan Page
2. Join SuperSurv webinar on 18th Sep
3. Answer the question on SuperSurv Fan Page after webinar

You may be the winners of a FREE SuperSurv!!

**please see details on the post after the webinar!

Thank you for your attention

SuperGIS Products



Server GIS

- SuperGIS Server
- SuperGIS 3D Earth Server
- SuperGIS Network Server
- SuperWebGIS

Cloud GIS

- SuperGIS Online
- Data Services
- Address Locator
- Excel Add-in
- Statistical API

Desktop GIS

- SuperGIS Desktop
- Spatial
- 3D
- Network
- 67-97 CTS (TW only)
- CCTS (TW only)
- Spatial Statistical
- Biodiversity
- Topology

Developer GIS

- SuperGIS Engine
- SuperNetObjects
- Network
- Biodiversity
- Spatial
- 3D
- Spatial Statistical

Mobile GIS

- SuperGIS Mobile Engine
- SuperPad
- SuperField
- SuperSurv (Android/iOS)
- SuperVeyor (Hardware bundle)

Solution

- SuperGIS Mobile Tour (Android)
- Mobile Cadastral GIS (TW only)

Subscribe to get latest Online Training Resources





<http://www.supergeotek.com>

staff@supergeotek.com

