






# SuperPad 3



Full-featured Mobile GIS Designed for Various Field Tasks



## With SuperPad 3, you can:

-  Activate NTRIP Solution to execute tasks precisely\*
-  Overlay various maps with on-the-fly projection
-  Implement diverse extensions to survey in your way
-  Integrate online resources in WMS, WMTS, WFS format
-  Synchronize data with colleagues by SuperGIS Server

\*For devices support NTRIP only



## Sub-meter Precision with NTRIP Solution\*

SuperPad 3 not only help surveyors to collect, edit and access geospatial info with handheld devices but also enables users to activate NTRIP solution to achieve sub-meter precision.



▲ Collect spatial data in sub-meter precision with NTRIP solution.

## Cloud Solution with SuperGIS Server

Bring the cloud tech to your field work. By syncing with SuperGIS Server, you can upload and access data with your colleagues to collaborate in real-time, greatly saving the time and the cost.

## Online Resources Integration

The renewed function for OGC services allows users to utilize various resources publishing in WMS, WMTS and WFS format. Now, you can use these services directly and simplify the current workflow.

## On-the-fly Map Projection

You can just add maps with different coordinate systems and make them overlay correctly with simple steps. Different layers can be edited directly without annoying coordinate conversion.

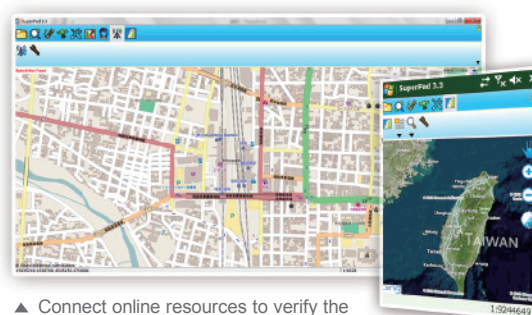
\*For devices support NTRIP only



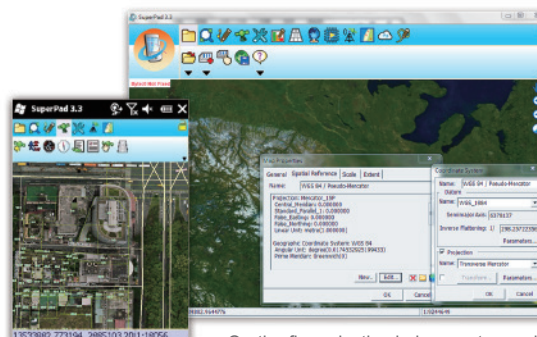
▲ Activate various extensions to meet different needs.

## Various Customized Extensions

SuperPad 3 offers diverse built-in extensions, including Advanced Attribute Editing, Sketch Labeling, Bird View, Network Tool, Fixed Zoom, and Internet Toolbar, etc., to meet various needs.



▲ Connect online resources to verify the data you collected.



▲ On-the-fly projection helps you to overlay maps with ease.

## System Requirements

### Supported Formats

- ▶ Vector data: GEO, SHP, DXF
- ▶ Raster data: SGR, BMP, GIF, PNG, MrSID, ECW, LANTIFF(includes GeoTIFF), JPG, JPG2000

### System Requirements

#### Handheld Devices

Operating System:

- Windows Mobile Software for Pocket PC 2003
- Windows Mobile 5.0 for Pocket PC and Smartphone
- Windows Mobile 2003 SE software for Pocket PC
- Windows Mobile 5.x/6.x

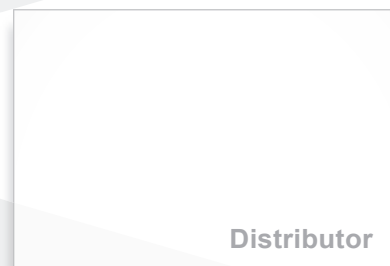
#### PC

Operating System:

- Windows 2000/XP/2003/Vista/7/8 (32/64bit)

#### Supported Languages

English, Arabic, Spanish, Portuguese, German, French, Italian, Russian, Turkish, Polish, Japanese, Korean, Traditional Chinese, Simplified Chinese and etc.



Distributor



**Supergeo Technologies Inc.**

5F., No.71, Zhouzi St., Neihu Dist., Taipei City 114 TAIWAN, R.O.C. (Taipei Neihu Technology Park)

Tel: +886-2-2659-1899

Fax: +886-2-2659-0612

staff@supergeotek.com

www.supergeotek.com