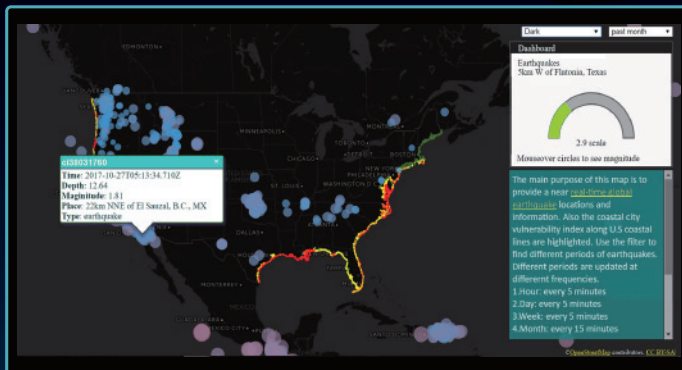


SuperGIS Server 10

Publish and Manage GIS Data over the Web without Coding



SuperGIS Server is powerful software that enables you to publish and share GIS data and geoprocessing online so that people can access them with browsers anywhere anytime. With the highly scalable design, you can solve both complex and simple problems by building a website that best meets your need. When using automatically updating data, it even can help people make decisions based on real-time trends.



Deploy Flexibly



Support OGC Standards



Customize without Coding



Perform Reliably

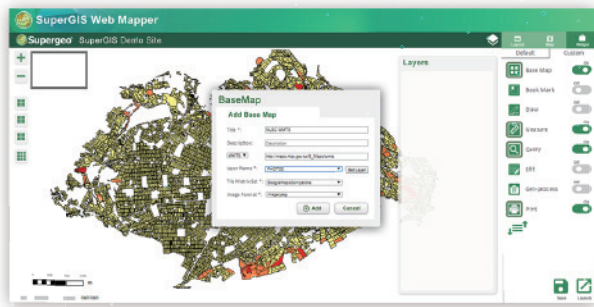


Fit to Any Device Size



Share Data Securely

SuperGIS Server 10 Key Features

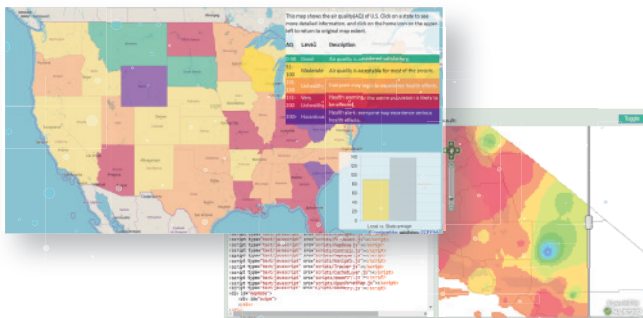


Building GIS Website without Coding

It is not a dream but a reality. The brand-new **Web Mapper** tool helps GIS beginners design their mapping websites, select needed widgets, and adjust layouts without writing codes. Experienced users can build up multiple sites more rapidly. **It's the must-try feature in SuperGIS Server 10!**

Fitting to Any Device Effortlessly

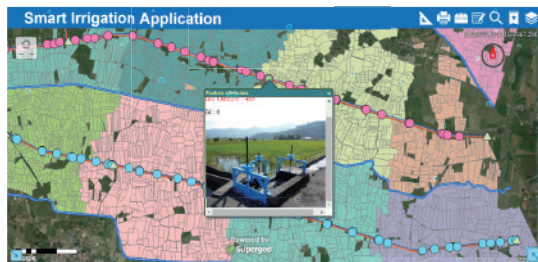
In SuperGIS Server 10, the default layout design of web applications supports mobile devices natively. There is no need to customize another page to fit various mobile devices, saving the time and effort spent on web development.



Developing with Rich API Samples

Hundreds of useful API samples and reference are free to download on **Supergeo Developer Network (SGDN)** so that programmers can customize GIS websites effortlessly. You may also browse demo sites to learn APIs interactively. APIs are available in **JavaScript, Silverlight & Flex.**

**Suggested Language: JavaScript*



Powerful & Reliable Performance

Being the backbone of several national GIS websites, SuperGIS Server is proved to provide stable services in extreme environments. With a proper deployment, it can serve hundreds of visitors simultaneously, making it the perfect choice for both big and small organizations.

System Requirements & Specs

Operating System

- ▶ Windows Server: 2016, 2012/R2, 2008/R2

Software

- ▶ IIS: 7 or higher
- ▶ .NET Framework: 3.5 or higher

Hardware

- ▶ CPU: Intel® Core™ i5-6402P or higher
- ▶ RAM: 4 GB or higher

Supported File Formats

- ▶ Vector: GEO, SHP, DXF, DWG, DGN, MIF
- ▶ Raster: SGR, SID, ECW, LAN, JPG, BMP, GeoTIFF

Supported Geodatabases

- ▶ MS Access, Oracle Spatial, MS SQL Server, PostgreSQL

Suggested Bandwidth

- ▶ Intranet: 100 MB or higher
- ▶ Internet: 4 MB/1 MB (download/ upload)

Distributor



Supergeo Technologies Inc.

5F., No.71, Zhouzi St., Neihu Dist., Taipei City 114 TAIWAN, R.O.C. (Taipei Neihu Technology Park)
Tel: +886-2-2659-1899 staff@supergeotek.com
Fax: +886-2-2659-0612 www.supergeotek.com