

Supergeo Webinar

Smart City Solutions with Interactive 3D GIS Technologies

Aug 20, 2014



Presenters

- ***Teyi Wang***
Sales Representative
International Business Division
- ***George Wang***
Product Specialist
Product Department
- ***Supergeo Support Team***

Product Roadmap

SuperGIS Products



Server GIS



SuperGIS Server
SuperGIS 3D Earth Server
 SuperGIS Network Server
 SuperWebGIS

Cloud GIS



SuperGIS Online
 - Data Services - Excel Add-in
 - Address Locator - Statistical API

Desktop GIS



SuperGIS Desktop
 - Spatial - Spatial Statistical
 - 3D - Biodiversity
 - Network - Topology
 - 67-97 CTS (TW only)
 - CCTS (TW only)

Developer GIS



SuperGIS Engine SuperNetObjects
 - Network - Spatial
 - Biodiversity - 3D
 - Spatial Statistical

Mobile GIS



SuperGIS Mobile Engine
 SuperPad
 SuperField
 SuperSurv (Android/iOS)
 SuperVeyor (Hardware bundle)

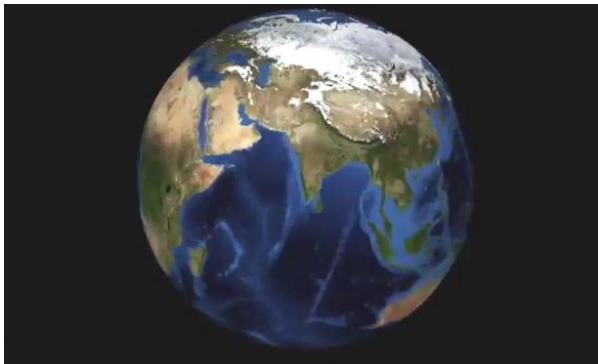
Solution



SuperGIS Mobile Tour (Android)
 Mobile Cadastral GIS (TW only)

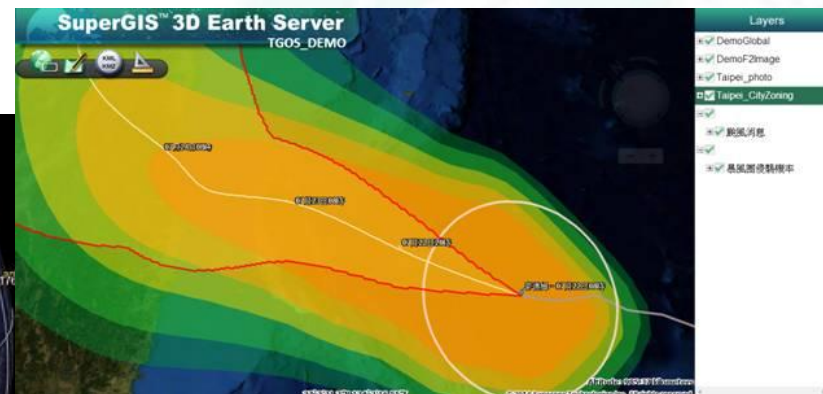
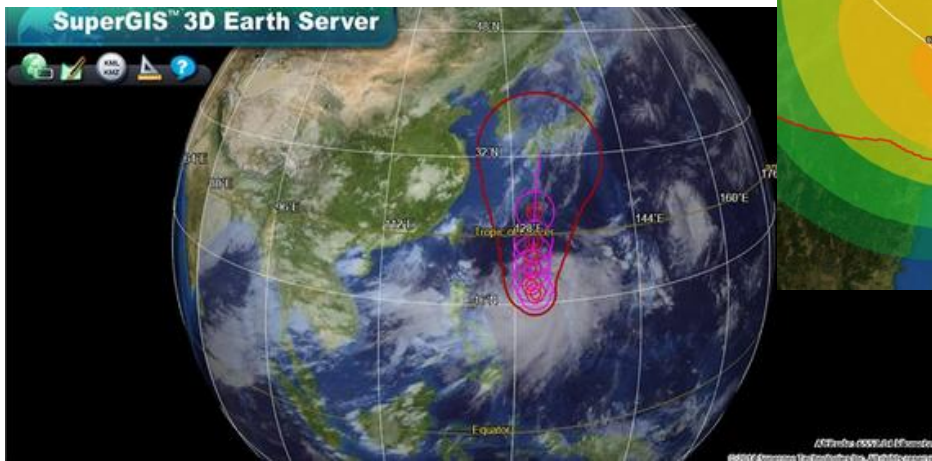
Position of SuperGIS 3D Earth Server

- Display and share the GIS data in a 3D view, allowing users to have a better data exploring experience
- **Developers** → publish GIS data easily as a 3D globe service
Clients → see the 3D globe from various client-side application



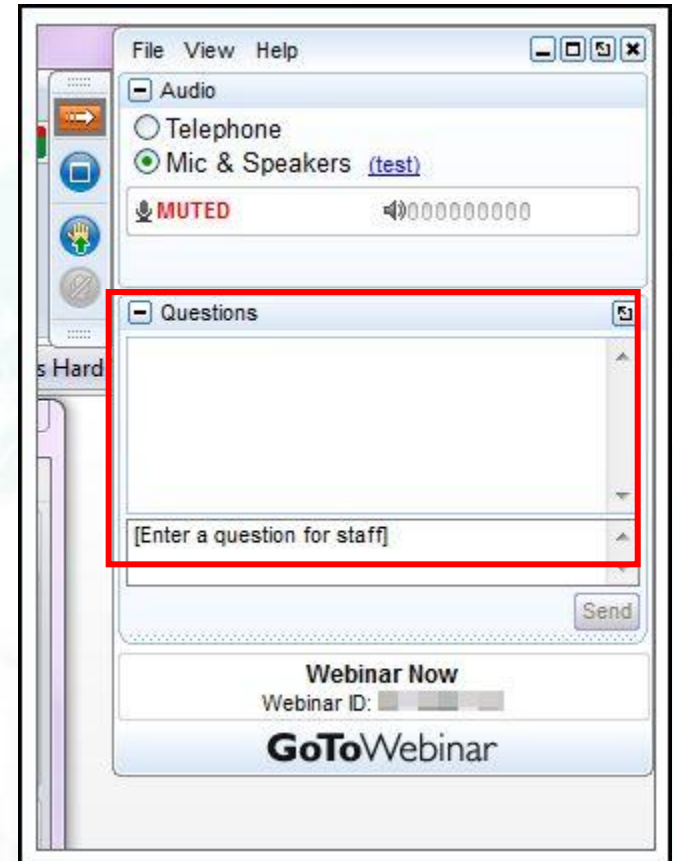
Overview of SuperGIS 3D Earth Server

- Display your GIS data in 3D view
- Centrally manage GIS data ex: SQL Server
- Share through web browser



Questions & Comments

- During the presentation, you may share your comments or questions
- Or, you may drop us an email to: staff@supergeotek.com
- Follow us on Twitter @ Supergeotek





搜尋 Twitter



已經擁有帳戶? 登入

Powerful, Affordable, Reliable
Your Superior GIS Software Choice



Server

Developer

Solutions



Supergeo[®]

Supergeo

@SupergeoTek

Leading global provider of GIS software, providing GIS users and developers with complete GIS solutions.

Taiwan

於 2010年6月 加入



@ Supergeotek



推文 PHOTOS/VIDEOS
715

推文

 **Supergeo** @Supergeo
DGPS helps you to

See the featured a

 **Supergeo** @Supergeo
Hey Surveyors, wh



Supergeo @SupergeoTek · 8月1日

Educating talented youths. See GIS Cafe reports SuperGIS application in HKPU. [15/mg/2n7v955](#)



Retweeted by **Supergeo**



Directions Magazine @directionsmag · 7月31日

Hong Kong Polytechnic University Empowers GIS Analyst with
@SuperGIS Desktop [geo.gi/fb/PztoHH](#) #geoinformatics #giseducation

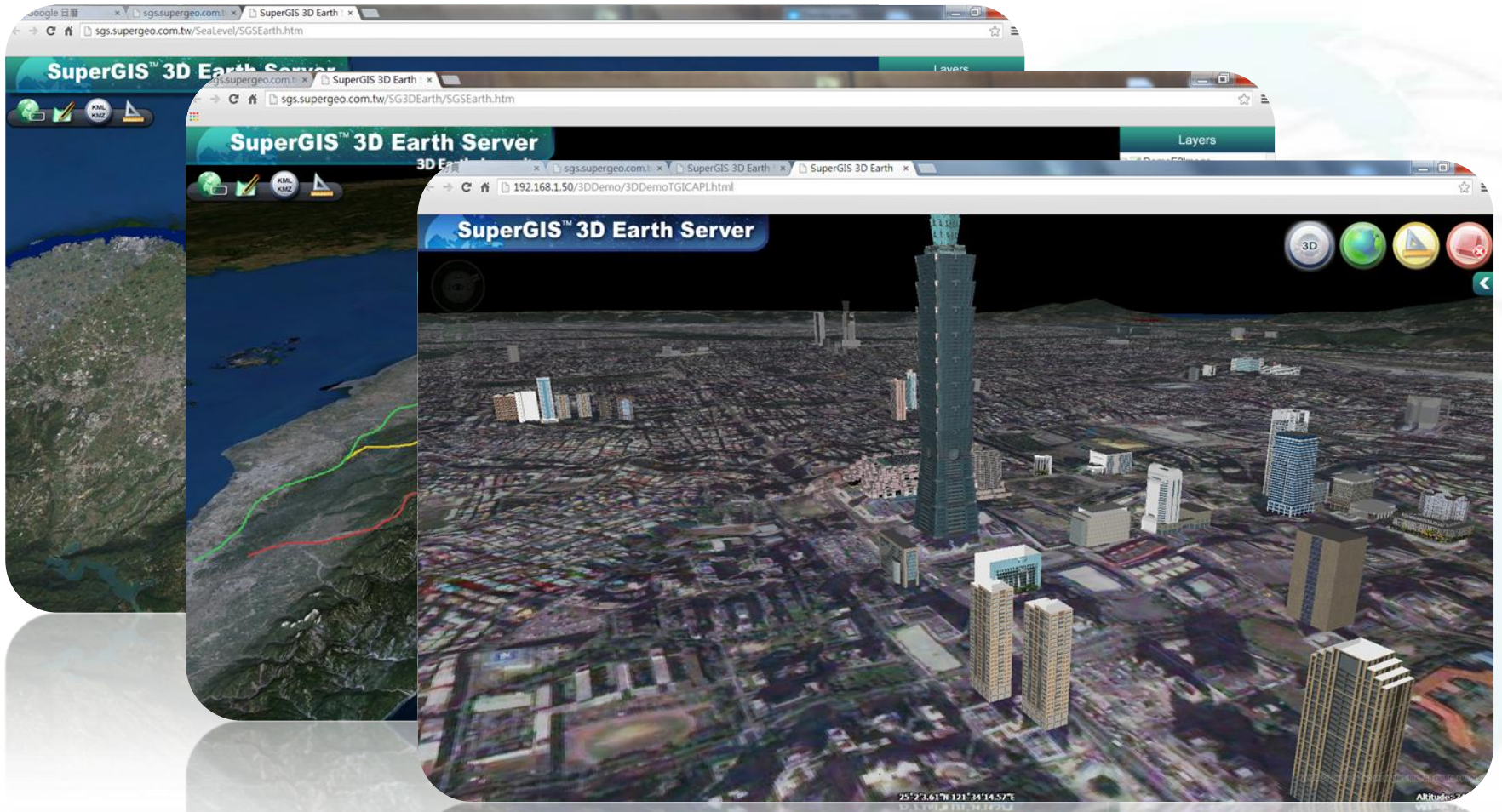


Supergeo @SupergeoTek · 7月30日

Dengue and GIS fever for Spanish and Portuguese speakers!

español...

SuperGIS 3D Earth Server 3.2



Benefit of 3D Display



Agenda

Part I: Use SuperGIS 3D Earth to display a Smart City

- A Smart City Platform
- Use the tools in SuperGIS 3D Earth

Part II: Build-up your own globe

- SuperGIS 3D Earth Server workflow
- Data Preparation and Publishing
- Build-up the globe

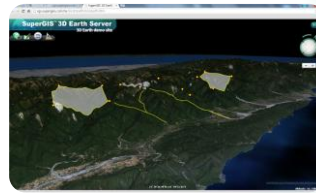
Agenda

Part I: Use SuperGIS 3D Earth to display a Smart City

- A Smart City Platform
- Use the tools in SuperGIS 3D Earth



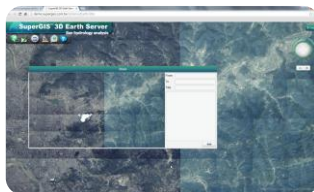
Index Map



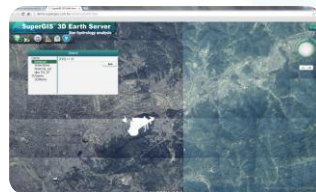
Marker



KML/KMZ



Share



Query



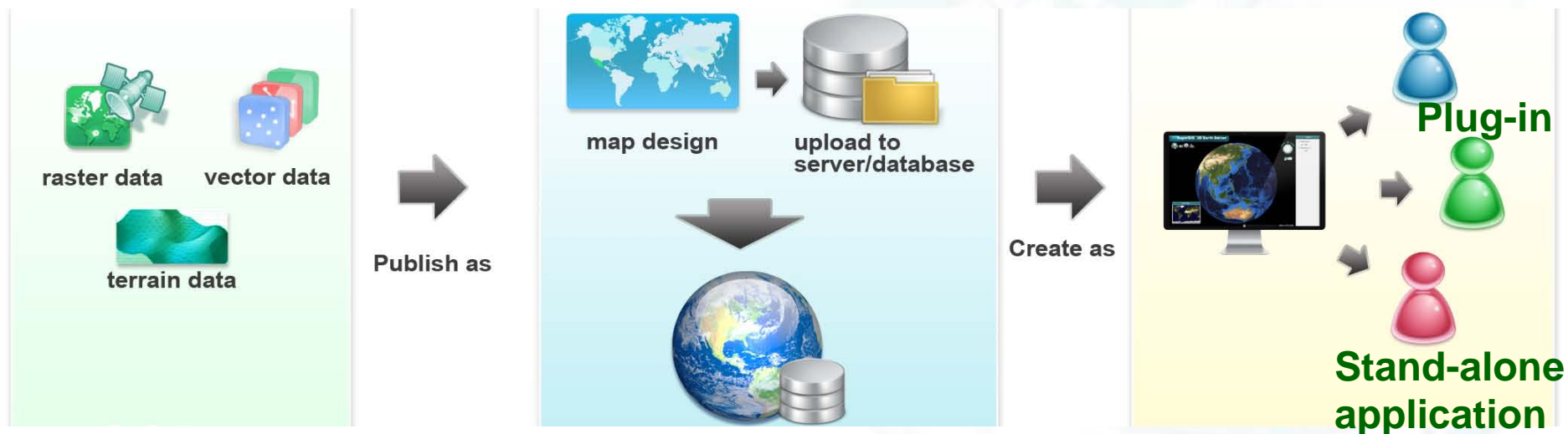
Measurement

* JavaScript and Plug-in APIs are also available.

Agenda

Part II: Build-up your own globe

- SuperGIS 3D Earth Server workflow
- Data Preparation and Publishing
- Build-up the globe



Part I



Use SuperGIS 3D Earth Plug-in
Interact with the 3D Environment

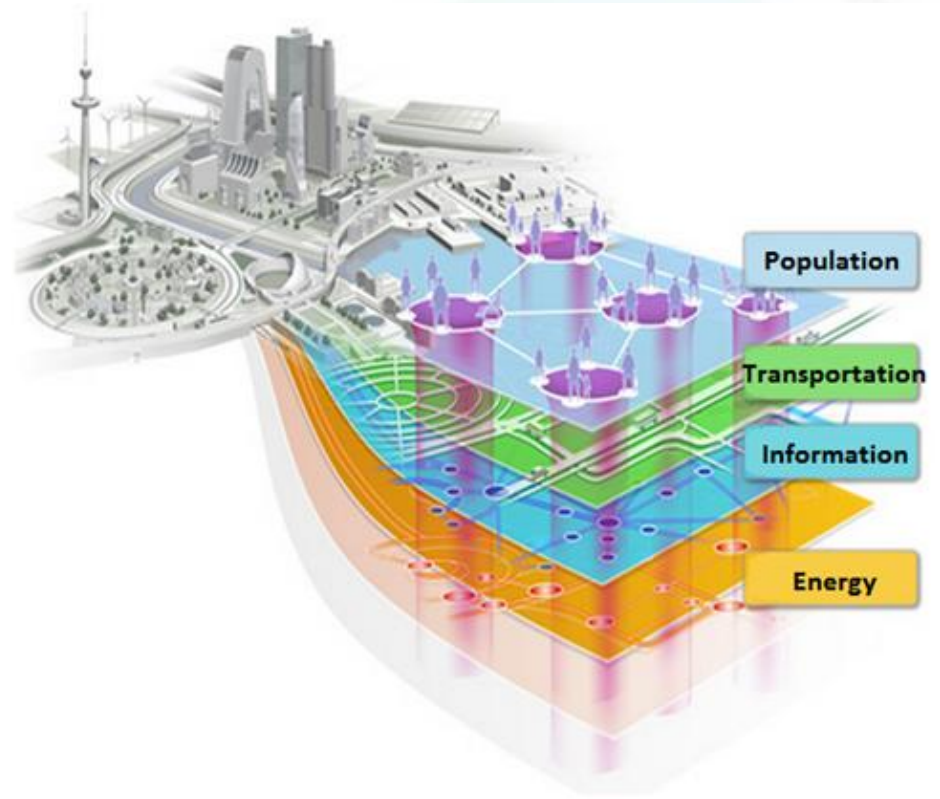
Use SuperGIS 3D Earth to display a Smart City

Concept of Smart City

To share as much information as possible to create an “efficient” city.

Some applications:

1. City general information
2. Traffic condition
3. Urban development
4. Disaster control



Disaster Control

Disasters such as typhoon and tsunami may cause the losses of money and lives.

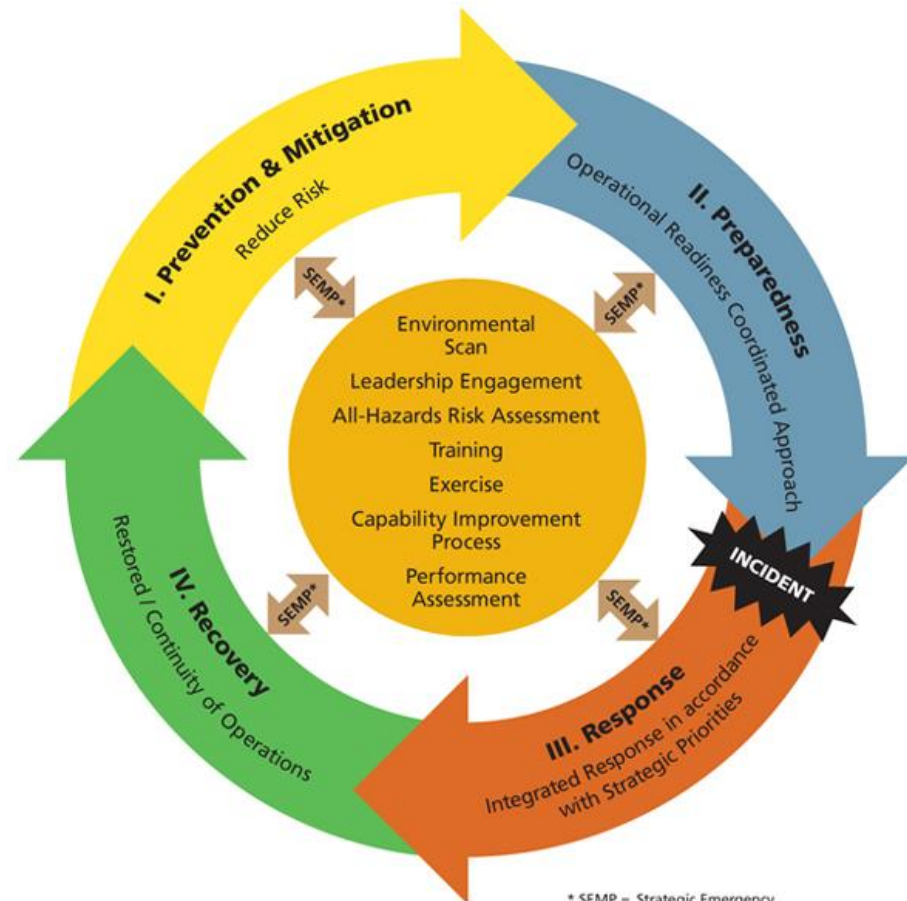
We need a platform for citizens to see the potential threats and be prepared for them.



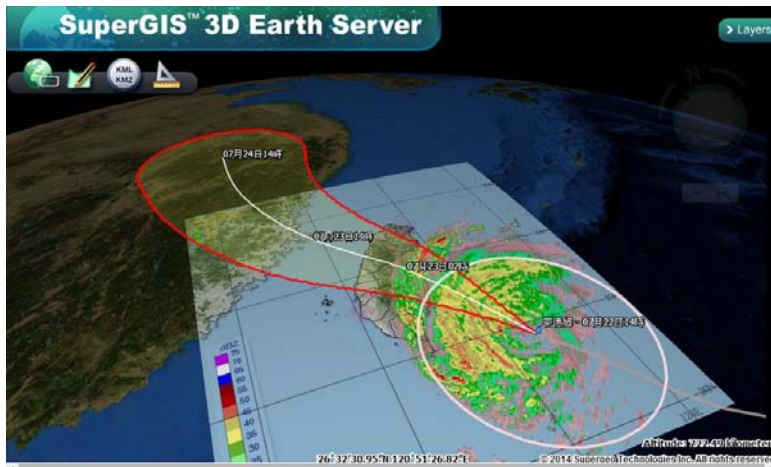
Disaster Management

1. Prevention
2. Preparedness
3. Response
4. Recovery

Emergency Management Continuum



* SEMP = Strategic Emergency Management Plan



BREAKTIME: QUICK POLL

**TIME TO
TAKE A
BREAK**



Follow us on Twitter
@ Supergeotek

Subscribe **SupergeoTV** now!



<http://www.youtube.com/user/supergeotv>

Part II

SuperGIS 3D Earth Server workflow
Data preparation and publishing
Build-up the globe

Build-up your own globe

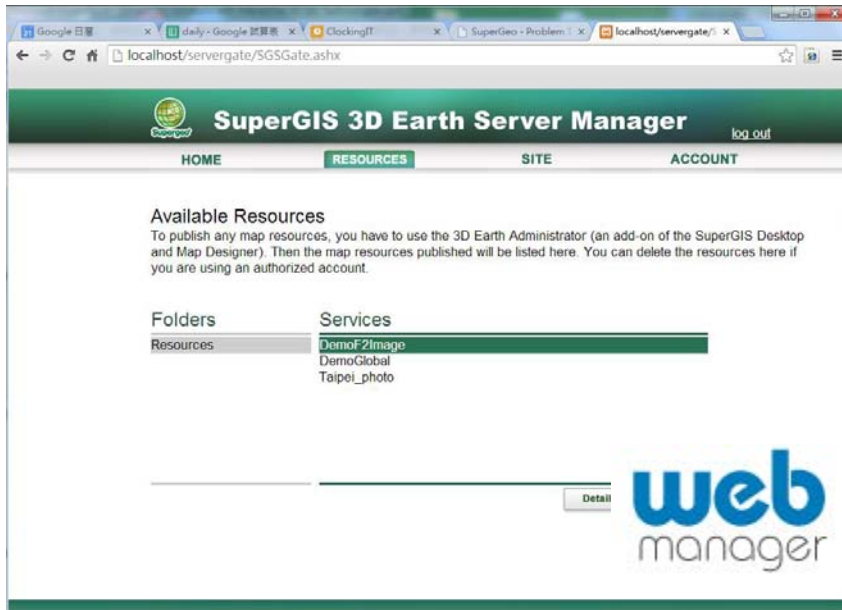


Workflow

SuperGIS 3D Earth Server Workflow



Build-up the globe



Conclusion

- The potential application of SuperGIS 3D Earth Server 3.2
- Build-up a Smart City platform to share information and do disaster control.
- Easy way to publish the service and build-up the globe.



Fancy a Trial? System Requirements

- Operating System: Windows Server 2008 (32/64 bit) /R2(64 bit) Windows Server 2012/ R2
- CPU: 2.2 GHz +
- Memory/RAM: 4 GB +



Supported File Formats

- **Vector data:** SHP, GEO, KML
- **Raster data:** BMP, PNG, LAN, GeoTIFF, ECW, SID, JPEG2000, JPEG, SGR, TIFF, USGS SDTS DEM, ASCII DEM, GIF , MrSID, DGN, CSV
- **Model data:** KMZ, 3DS, X, CityGML



Upcoming events

Supergeo Webinars

- Sep 17 – targeting at Mobile GIS-SuperSurv
- Oct 22 – targeting at SuperGIS Server

Exhibitions

- Oct 7-9, INTERGEO, Berlin, Germany
Booth # A3.033



Download Free Trial at:
www.supergeotek.com

A promotional banner for the INTERGEO booth. It features the text "VISIT US AT BOOTH A3.033" at the top. Below that is the "INTERGEO" logo in large blue letters, with the subtitle "Conference and Trade Fair for Geodesy, Geoinformation and Land Management" underneath. To the right is a globe icon with a red circular arrow around it. At the bottom left is a gold medal icon, and at the bottom right is the text "Oct. 7th to 9th 2014 | Berlin".

VISIT US AT BOOTH **A3.033**

INTERGEO
Conference and Trade Fair for Geodesy,
Geoinformation and Land Management

Oct. 7th to 9th 2014 | Berlin

All questions are welcomed!

Thank you for your attention



Subscribe **SupergeoTV** today!

Contact us:

<http://www.supergeotek.com>

Email: staff@supergeotek.com

<http://www.youtube.com/user/supergeotv>