

SuperGIS Webinar

Smart Industrial Hazard Management with GIS

Jun, 17 , 2015



Presenters

■ Patty Chen

Marketing Specialist
International Marketing Division



■ Sydney Lai

Product Specialist
Product Department



Product Roadmap

SuperGIS Products




Server GIS

- SuperGIS Server
- SuperGIS 3D Earth Server
- SuperGIS Network Server
- SuperWebGIS

Cloud GIS

- SuperGIS Online
- Data Services
- Excel Add-in
- Address Locator
- Statistical API



Desktop GIS

SuperGIS Desktop


- Spatial
- 3D
- Network
- 67-97 CTS (TW only)
- CCTS (TW only)
- Spatial Statistical
- Biodiversity
- Topology



Developer GIS

SuperGIS Engine SuperNetObjects


- Network
- Biodiversity
- Spatial Statistical
- Spatial
- 3D



Mobile GIS

- SuperGIS Mobile Engine
- SuperPad
- SuperField
- SuperSurv (Android/iOS)
- SuperVeyor (Hardware bundle)

Solution



- SuperGIS Mobile Tour (Android)
- Mobile Cadastral GIS (TW only)



Overview of SuperGIS Desktop

- GIS data creation, editing and analysis
- Show the original landforms and its spatial features
- Support various data formats
- Share the spatial data with co-workers

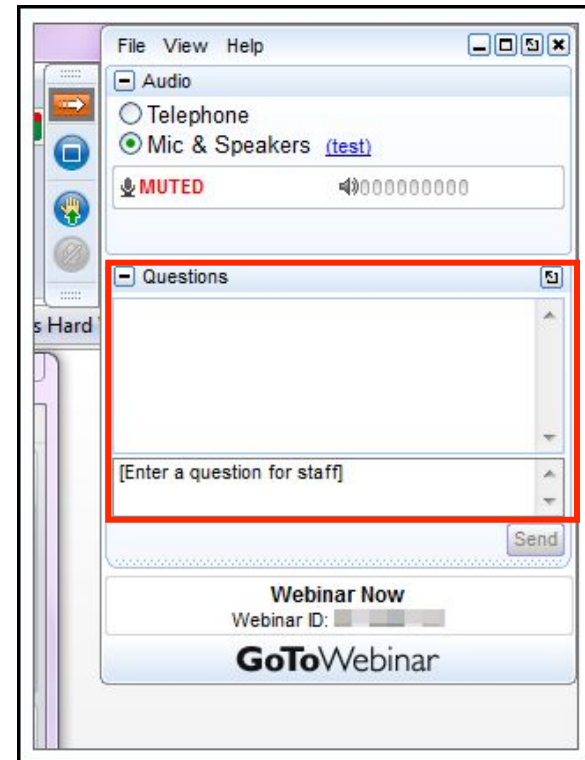


Questions & Comments

- Share your comments or questions
- Or, drop us an email staff@supergeotek.com



@2nb6186016K



SuperGIS Webinar

Smart Industrial Hazard Management



Background Introduction

■ 2014 Kaohsiung gas explosions

■ Death tolls

- 32 people

■ Injured

- 321 people

■ Other Impacts

- Power outages: 29,789 households

- Natural Gas outages: 23,642 households

- Water outage: 13,500 households

- 69 base stations damaged

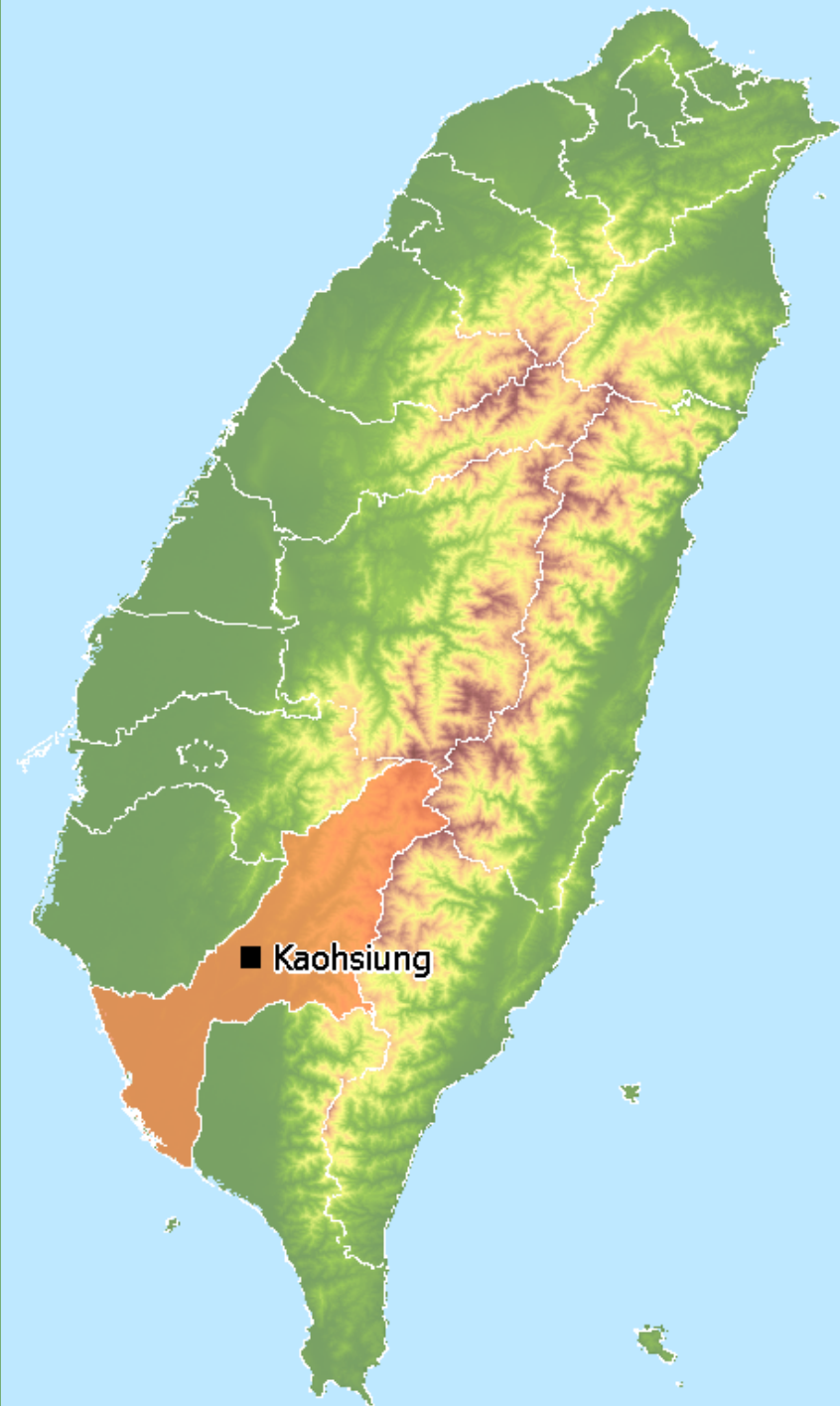
- 83,819 people affected



Background Introduction

■ Kaohsiung City

- Largest industrial and commercial harbor city in Taiwan
- More than 7000 factories locate
 - Petrochemical and refining industries
 - Green energy industries
 - Chemical Industries
 - Iron and steel industries
 - Chemical storage industries



Background Introduction

■ Kaohsiung City

- Largest industrial and commercial harbor city in Taiwan
- More than 7000 factories locate
 - Petrochemical and refining industries
 - Green energy industries
 - Chemical Industries
 - Iron and steel industries
 - Chemical storage industries



Manufacturing & Utilization



Storage



Transportation



Waste Treatment



Smart Industrial Hazard Management

- Increase efficiency with information
 - Where...? Location of incident...
 - How many...? People affected, injuries, deaths...
 - Where is...? Fire station, emergency support, hospital...
 - How much...? Property damage, economic loss...
 - What...? Impact area...



Smart Industrial Hazard Management

- With SuperGIS Desktop, you can easily:
 - Integrate many different types of data
 - Spatial data
 - Non spatial data - Tables, texts, photos, links...
 - Visualize data
 - Map what you care about
 - Conduct spatial analyses
 - Make better strategies



Agendas

Characterize potential areas

Quantify affects

Review emergency resources

Build up an interactive map



Agendas

Characterize potential areas

Quantify affects

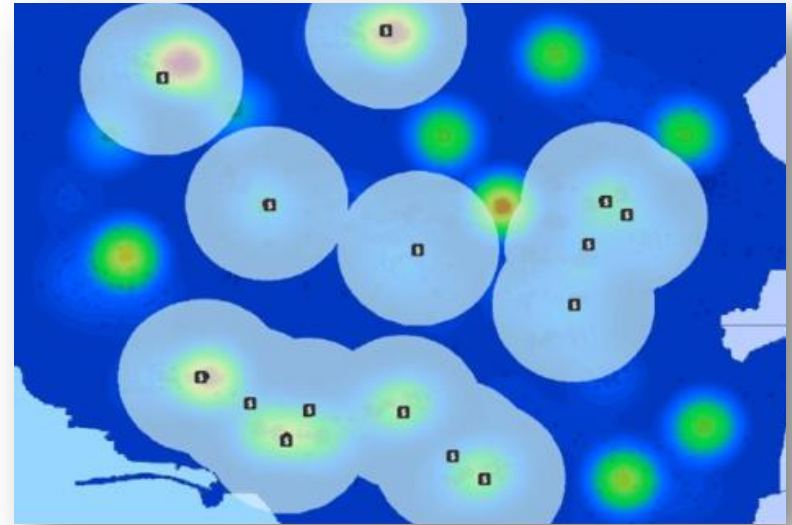
Review emergency resources

Build up an interactive map



Characterize Potential Areas

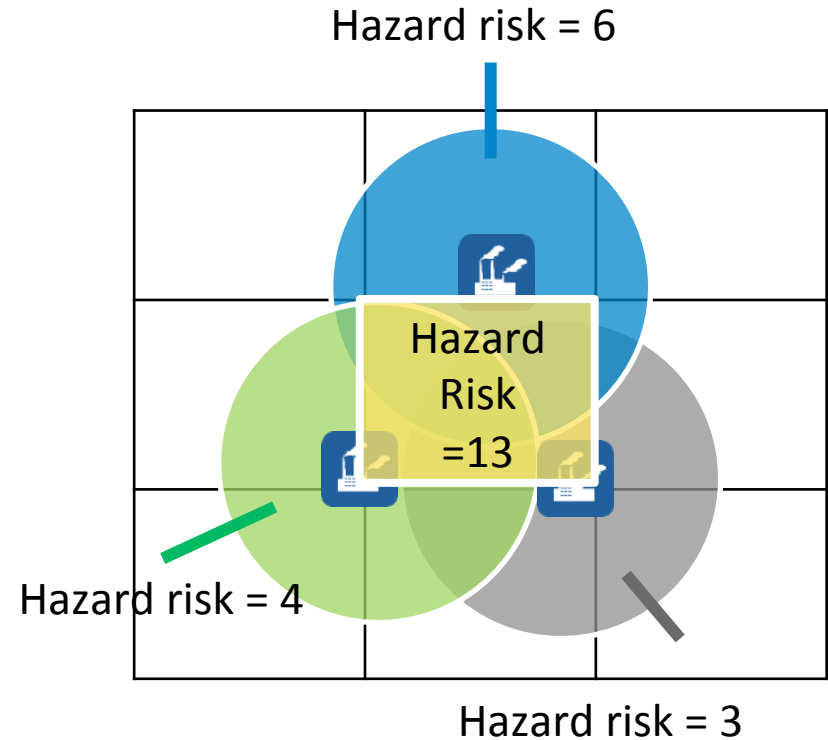
- Characterize potential areas
 - Recognize the risk distribution
 - Plan the emergency resources based on risk



Characterize Potential Areas

Calculation Process

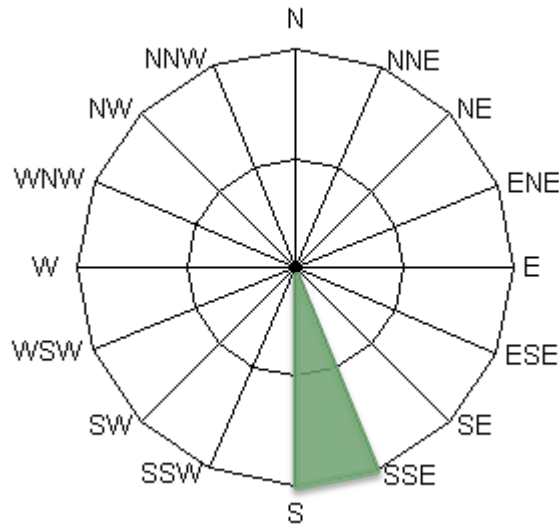
- Set grids
- Site of factory
- Produce range of impact
- Spatially
- Sum value of each cell



Characterize Potential Areas

■ Consider wind directions

Risk of each wind direction



Direction	Risk	Direction	Risk
NNE	0.048	SSW	0.112
NE	0.034	SW	0.08
ENE	0.038	WSW	0.04
E	0.033	W	0.035
ESE	0.033	WNW	0.036
SE	0.065	NW	0.046
SSE	0.079	NNW	0.038
S	0.23	N	0.035



SuperGIS Webinar

Smart Industrial Hazard Management



Demonstration



SuperGIS for Developer

Home [SupergeoTek.com](#)

Supergeo Developer Network

Sign in / Register

Library Supergeo Forums Downloads Resource Center ▾ News Help ▾

Welcome to SGDN

If you are a software application developer, the Supergeo Developer Network (SGDN) provides a cost-effective way to use and develop SuperGIS products and technologies in applications and systems you design and build. At SGDN, you can be offered many kinds of materials such as documentations, sample codes, scripts and etc. In addition, at Supergeo Forums, you can share your thoughts and experiences with other developers. Even you can obtain the solutions by stating your questions on the Supergeo Forums.

News for Developer

- [Map to go: take your maps everywhere](#) (2015-05-25)
- [Hello SuperSurv 3.3 \(Android\)! Meet the Best Mobile GIS Solution Ever!](#) (2015-05-19)
- [Perfection and Profession: Meet the Brand New SuperPad 3.3!](#) (2015-05-05)
- [Brand New SuperGIS Desktop 3.3, Now Released for Worldwide Users!](#) (2015-04-28)
- [Evolvel New techs for developer GIS, meet the latest SuperGIS Engine 3.3](#) (2015-04-22)

[more news...](#)

Featured in Library



A Process Design of Spatial Statistical Analysis Using SuperGIS Toolkit

SuperGIS Server is designed for giving the organizations with the ability to create, manage, integrate and publish the various types of GIS services. With SuperGIS Server, the spatial data and image in all types as well as GIS functions can be applied as GIS services in desktop, mobile and web applications over the Internet.

[more...](#)

Wednesday, Jun 3, 2015 (GMT+8)

First Time User?
Associate your subscription with your [SupergeoTek Account](#) and you will be able to manage your benefits online.

Learn More





Agendas

Characterize potential areas

Quantify affects

Review emergency resources

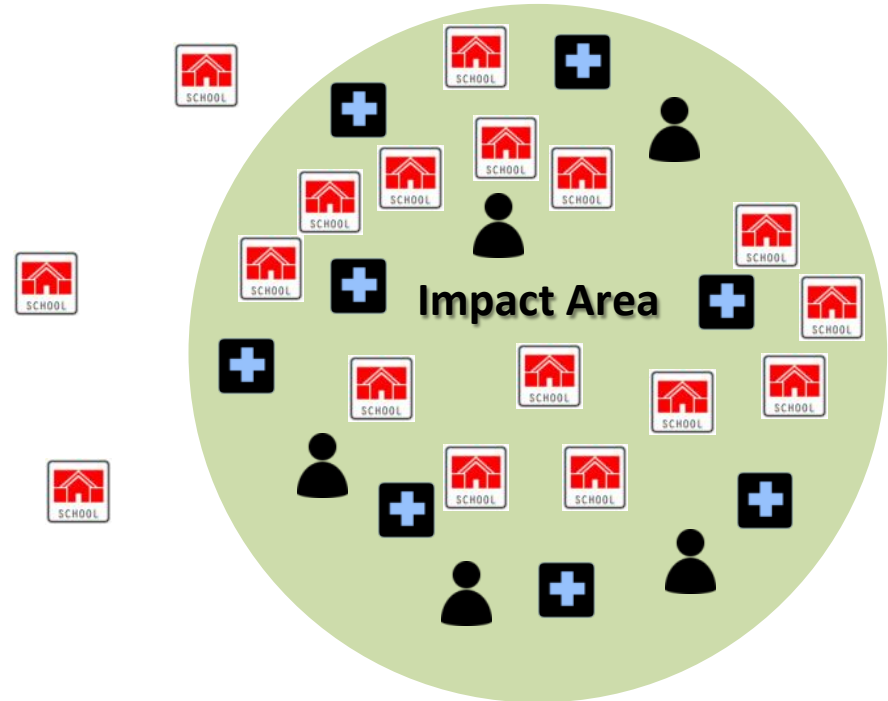
Build up an interactive map



Quantify Affects

- Use spatial method to count loss and affected quickly

Find out how many features locate inside impact area



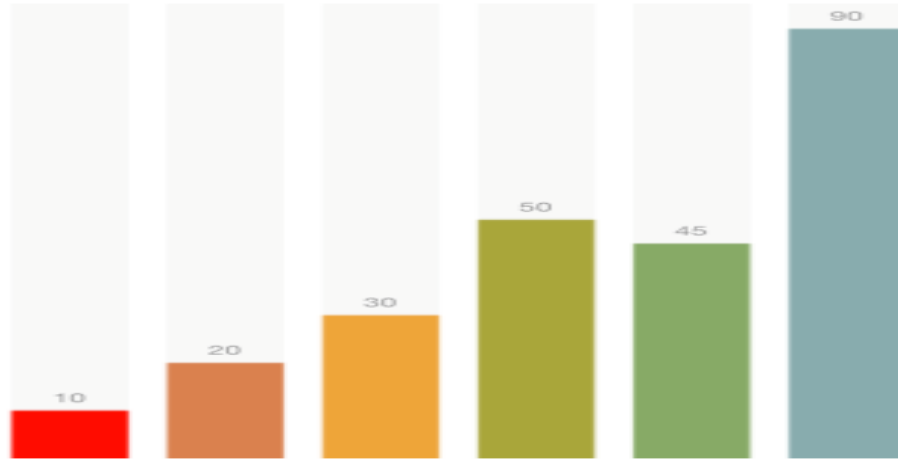
SuperGIS Webinar

Smart Industrial Hazard Management



Demonstration





BREAKTIME: QUICK POLL



SuperGIS Webinar

Smart Industrial Hazard Management



Agendas

Characterize potential areas

Quantify affects

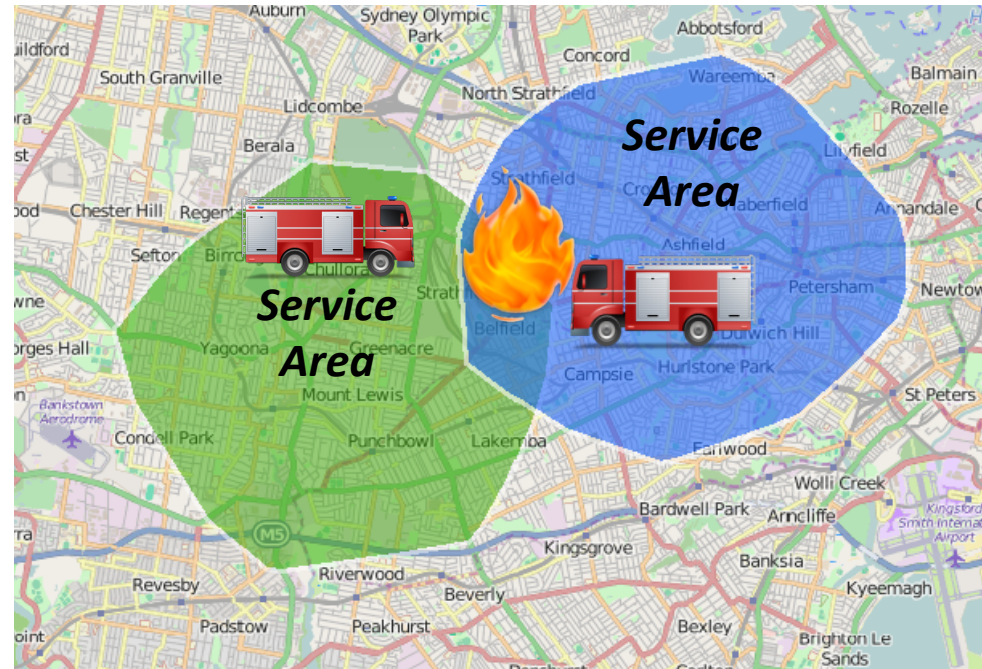
Review emergency resources

Build up an interactive map



Review Emergency Resources

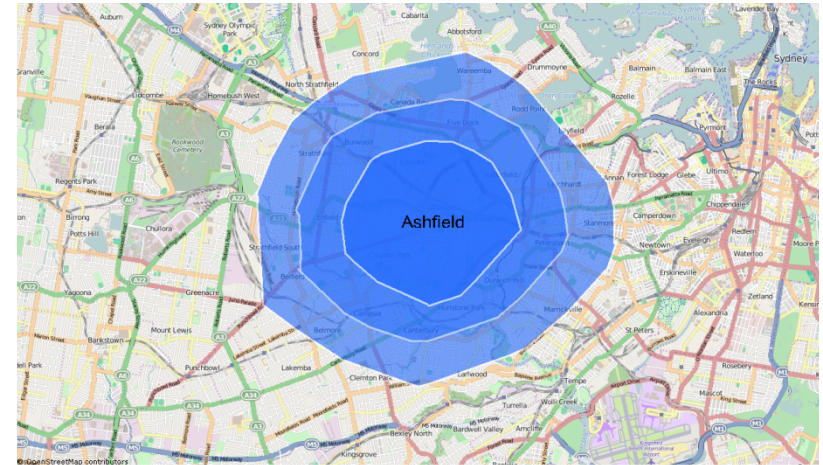
■ Each location should be supported by at least two fire stations.



Review Emergency Resources

- Network Analyst
 - Create service area

- Calculate supported fire stations of each location



SuperGIS Webinar

Smart Industrial Hazard Management



Demonstration



Agendas

Characterize potential areas

Quantify affects

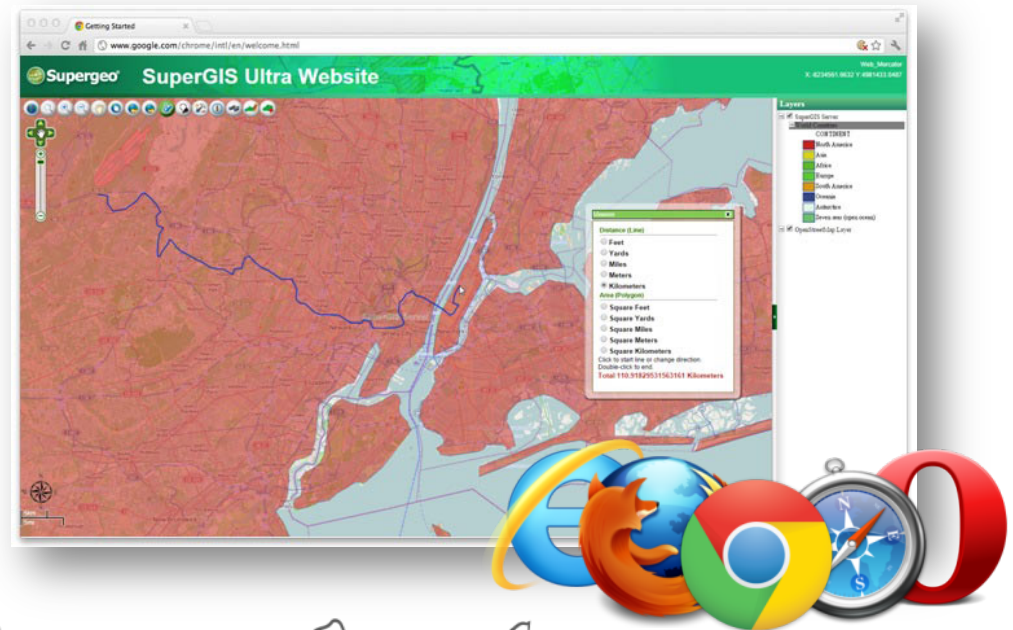
Review emergency resources

Build up an interactive map



Build Up An Interactive Map

- Make data open and transparent
- Strengthen hazard awareness



SuperGIS Webinar

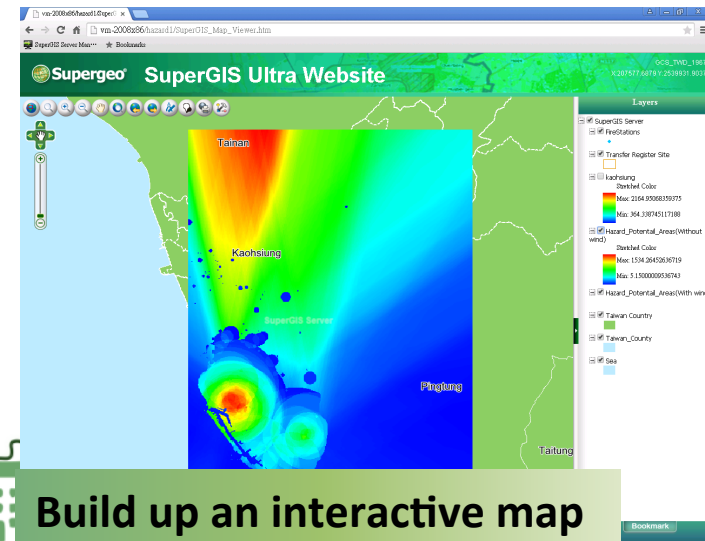
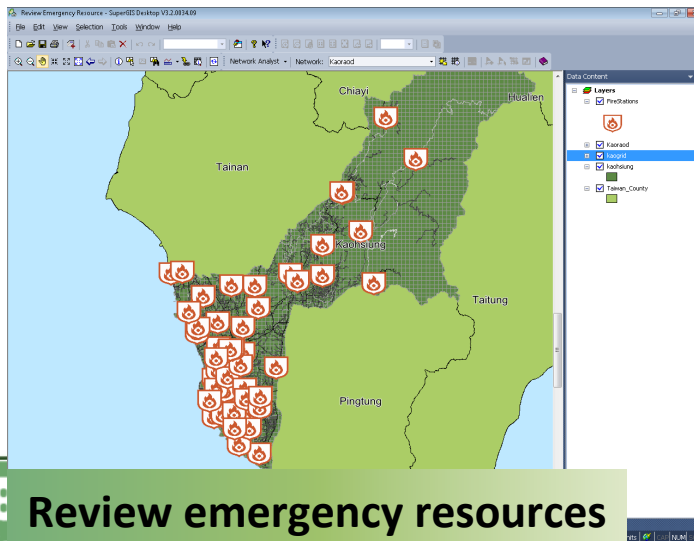
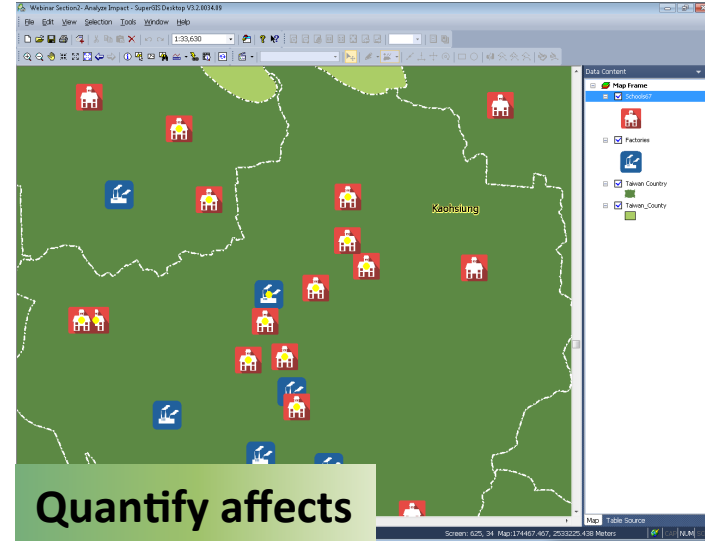
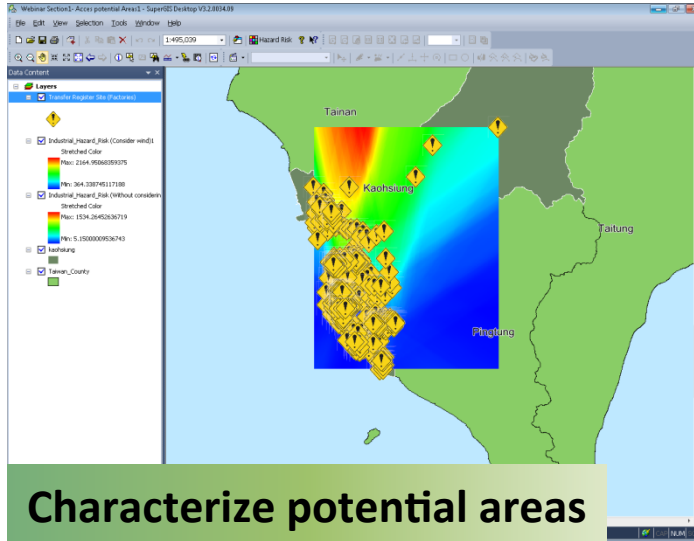
Smart Industrial Hazard Management

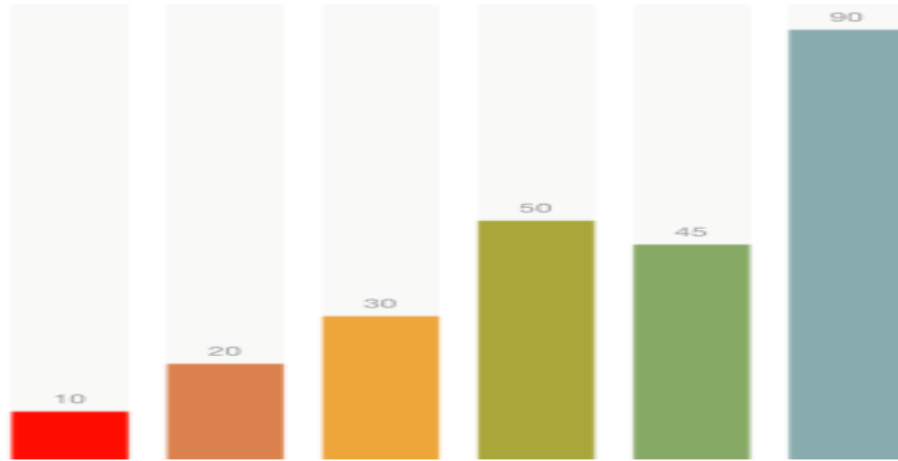


Demonstration



Overviews of Agendas





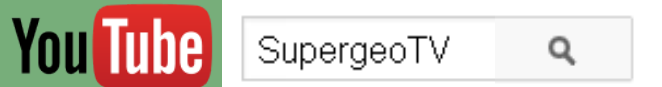
BREAKTIME: QUICK POLL



Q&A Time

Subscribe Us

Supergeo Online Training
Resources



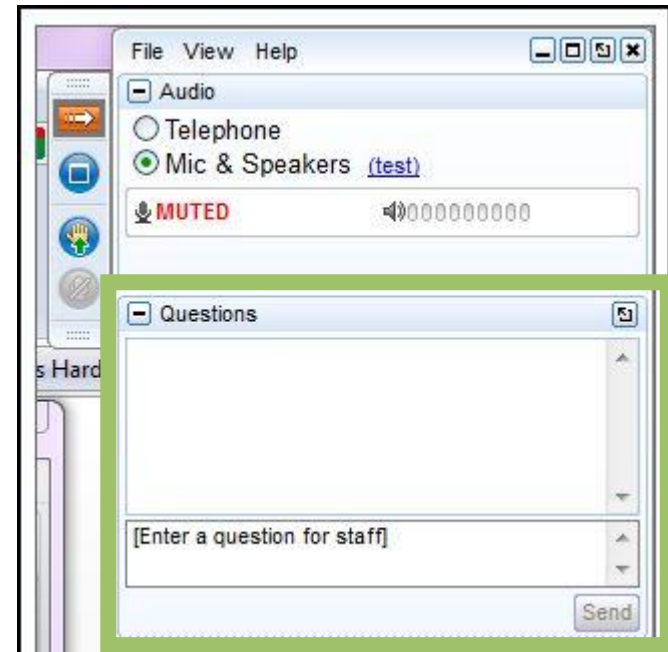
Any Questions ?

<http://www.supergeotek.com>
staff@supergeotek.com

Follow Us



33



Supergeo GIS Forum

Supergeo GIS Forum

Meet GIS Experts Online to Inspire Your Thoughts



**Meet GIS Experts Online
to Inspire Your Thoughts**



