

# Supergeo Webinar

***Boost Your Field Productivity &  
Accuracy with SuperGIS Mobile  
Solutions***

March 25, 2015



# Presenters

---

- ***Olivia Lin***

Tech Support Engineer  
GIS Training & Support Center

- ***Sarah Liu***

Sales and Marketing Director

- ***Supergeo Support Team***



# Using software today:

## SuperGIS Products



### Server GIS



SuperGIS Server  
 SuperGIS 3D Earth Server  
 SuperGIS Network Server  
 SuperWebGIS

### Cloud GIS



SuperGIS Online  
 - Data Services - Excel Add-in  
 - Address Locator - Statistical API



### Developer GIS

SuperGIS Engine SuperNetObjects  
 - Network - Spatial  
 - Biodiversity - 3D  
 - Spatial Statistical

### Desktop GIS



#### SuperGIS Desktop

- Spatial - Spatial Statistical  
 - 3D - Biodiversity  
 - Network - Topology  
 - 67-97 CTS (TW only)  
 - CCTS (TW only)

### Mobile GIS



SuperGIS Mobile Engine  
 SuperPad  
 SuperField  
 SuperSurv (Android/iOS)  
 SuperVeyor (Hardware bundle)

### Solution



SuperGIS Mobile Tour (Android)  
 Mobile Cadastral GIS (TW only)

*Your Best Mobile GIS Software Solution*

# SuperPad is:

---

- Feature-rich Mobile GIS Software
- Designed for field tasks like mobile mapping and GIS data collection
- Support OS: Windows Mobile and Windows XP/7/8.1



# Overview of SuperPad

- SuperPad enables you to:
  - Display, measure, query data with ease
  - Capture and edit geospatial data with high efficiency & accuracy
  - Update and synchronize spatial data with server side database timely



- ✓ User friendly toolbars
- ✓ Real time satellite and GPS info
- ✓ Multi-lingual user interface

# Spec of SuperPad

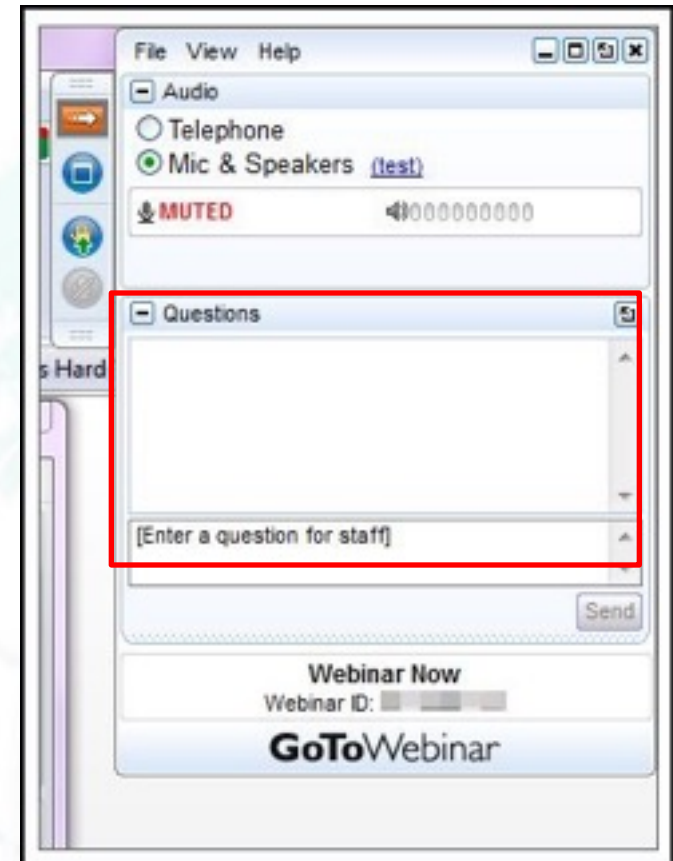
---

- Vector data: GEO, SHP, DXF
- Raster data: SGR, BMP, GIF, PNG, MrSID, ECW, LAN, TIFF, JPG, JPEG2000
- Support to import APM file
- **DGPS: RINEX**
- **NTRIP: RTCM**
- Official software package includes one PC license and one PDA license, for convenient data display, edit, and field survey.



# Questions & Comments

- During the presentation, you may share your comments or questions
- Or, you may drop us an email to: [staff@supergeotek.com](mailto:staff@supergeotek.com)
- Follow us on Twitter **@Supergeotek**



# Outline

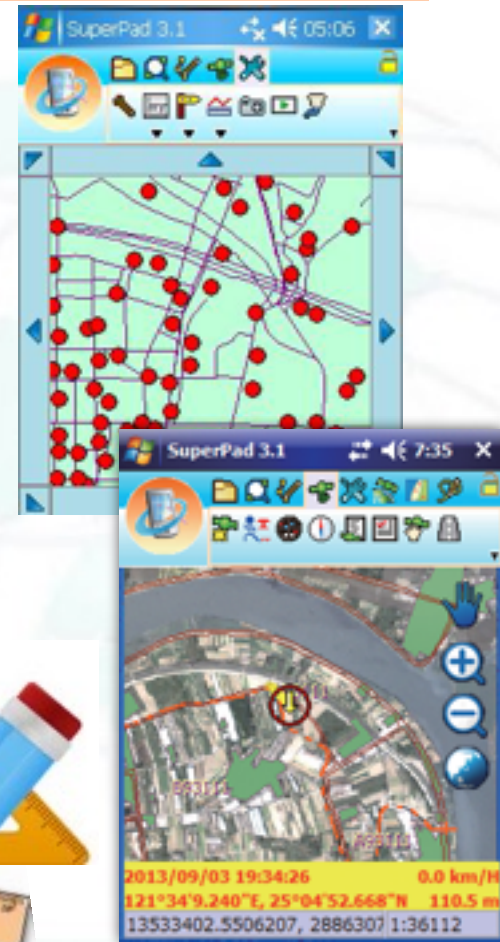
- High positioning performance
  - NTRIP v.s. GNSS
- Customized extensions
  - Abundant extensions
- A case of census survey
  - Smart attribute table editing
  - Synchronization with GIS Server
- On-demand GIS development team





# With SuperPad, you can...

- Create/Import feature layers and image files
- Utilize GIS & GPS tools to capture and display geographic information
- Off-line edit and synchronize data with SuperGIS Server
- All-in-one applications
- Built-up custom functions with flexible development environment



---

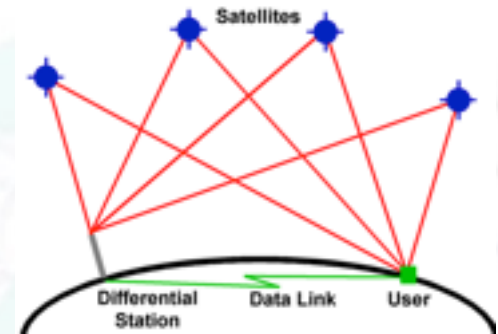
# High positioning performance

via NTRIP & DGPS

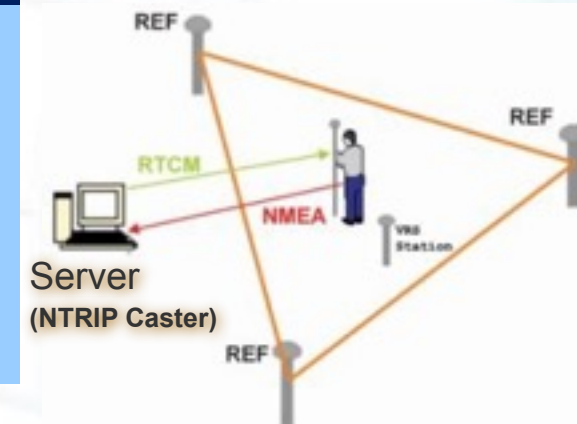


# SuperPad supports GPS signals receiving by

- GNSS
  - Global Navigation Satellite System
  - Networked Transport of RTCM via Internet Protocol



	NTRIP	GNSS
Accuracy	sub-meter	close to 1 m
Post-process time	real-time	1 day delayed
Cost of equipment	rent / buy	free
Coverage	small	huge (~200km)



- Collect data using NTRIP extension
  - Activate **NTRIP** extension to capture data more precisely
  - Supports **U-blox**, **NovAtel** and **Hemisphere**
  - **Mode** indicates the correction level.
    - ✓ GPS 2D/3D, DGPS 2D/3D, Fix/Float RTK



---

## A short demo for operating NTRIP



# Survey Results



— NTRIP  
— GPS

# Survey Results



— NTRIP  
— GPS

---

# Post survey process

Another solution to increase the accuracy of the origin data





# Post survey process

In the field



Use the GNSS extension



In the office

Download the correction data



Desktop

Navigation: <ftp://garner.ucsd.edu/pub/nav/>

RINEX : <ftp://garner.ucsd.edu/pub/rinex/>

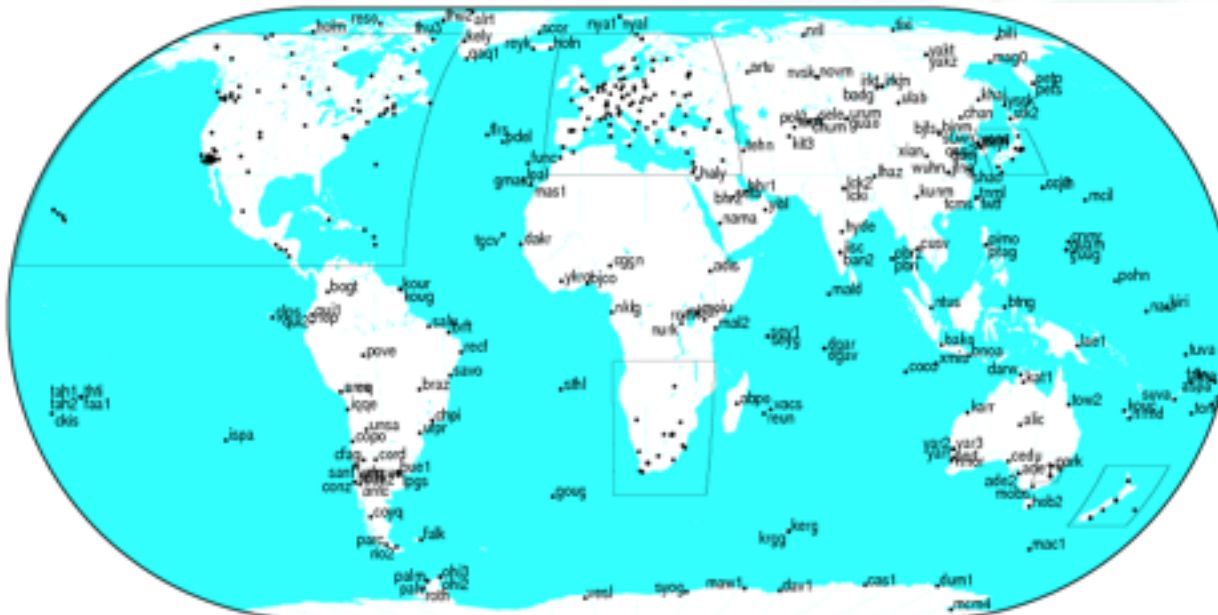
Post process data



# Post survey process

- **Before post process**

- Find the nearest base station via IGS
  - ✓ Within 1 degree recommended
  - ✓ <http://igscb.jpl.nasa.gov/network/complete.html>



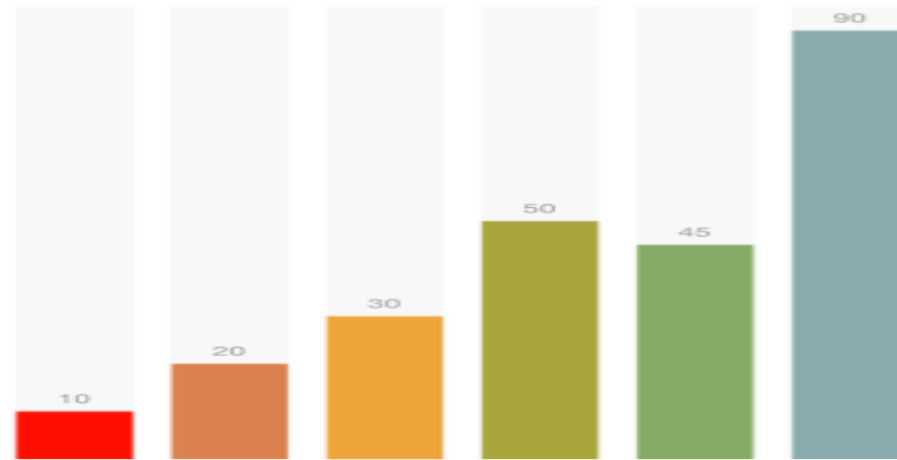
# Post survey process

---

- In SuperPad
  - Copy the raw data from SuperPad
    - ✓ Feature data
    - ✓ RINEX file (Rinex, POS, Speed) and GNSS file (dgps)
- In SuperGIS Desktop
  - Activate **Differential GPS** add-on
  - Perform post process

# Demonstration





## BREAKTIME: QUICK POLL

The YouTube logo, with "You" in black and "Tube" in white on a red rounded rectangle background.

SupergeoTV

---

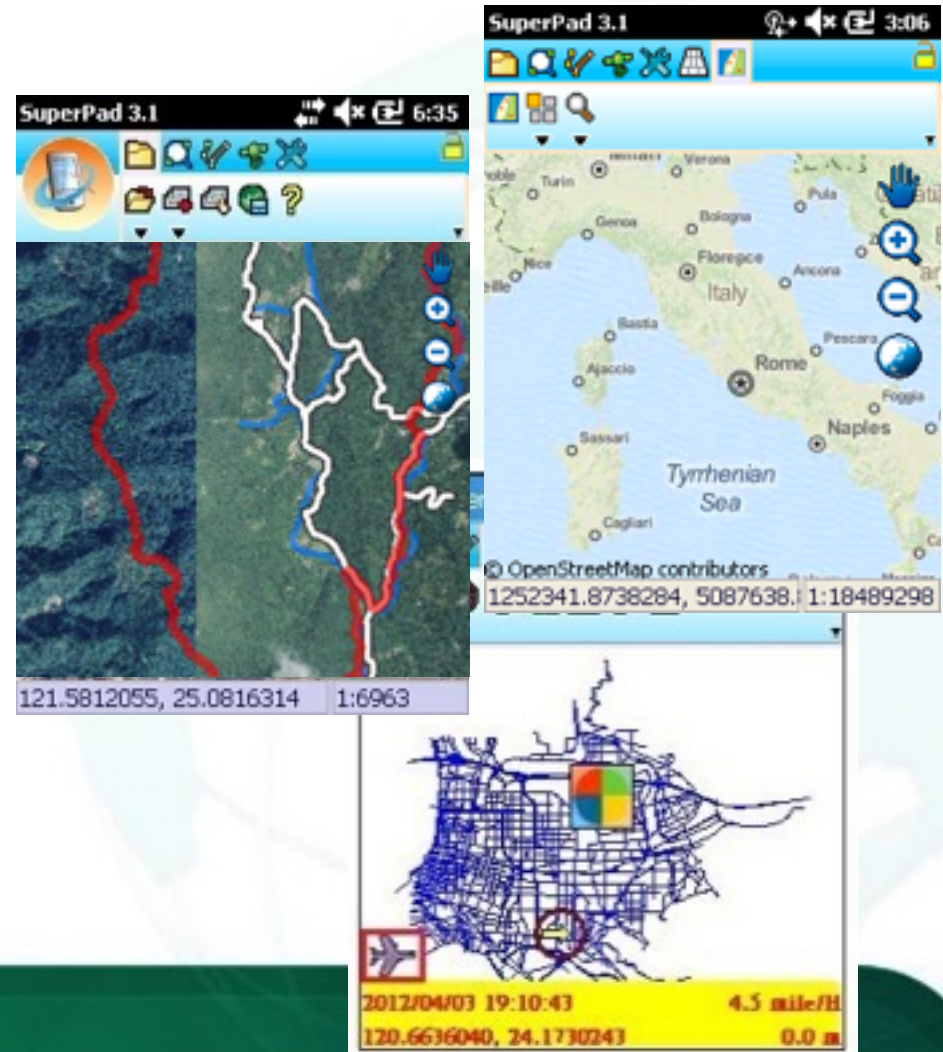
# Custom Analyst Tools

Abundant extensions



# Customized extensions

- GNSS
- SBAS
- Ntrip
- Laser
- STCLayer
- NetworkTool
- OnlineMapTool
- DataServicesToolbar
  
- etc..



# Laser Range Finder

Determine the distance to an object.

- Add the position of the object.
- Activate the **Laser** extension.





# Network Tool

## Provides optimized route planning

- Activate **NetworkTool** extension
- Acquire network file (.nrt)
- Set the location as a label
- Design stops and barriers to create route



---

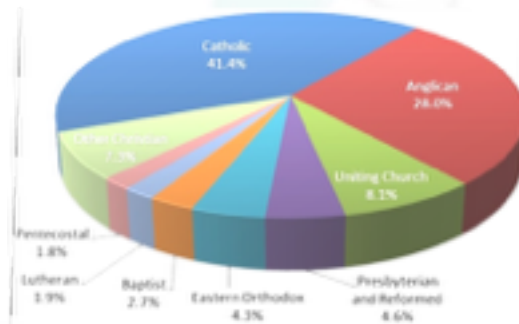
# Census survey

- Smart attribute data editing
- Synchronization with GIS Server



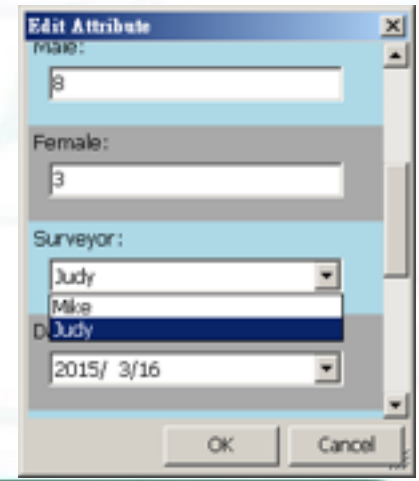
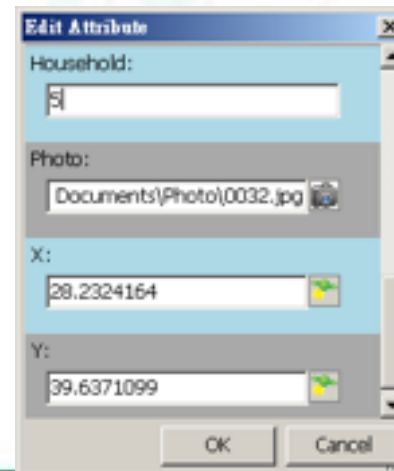
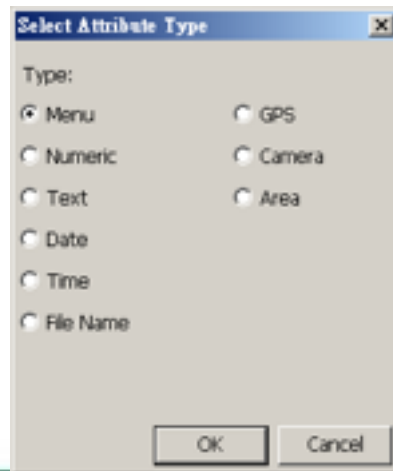
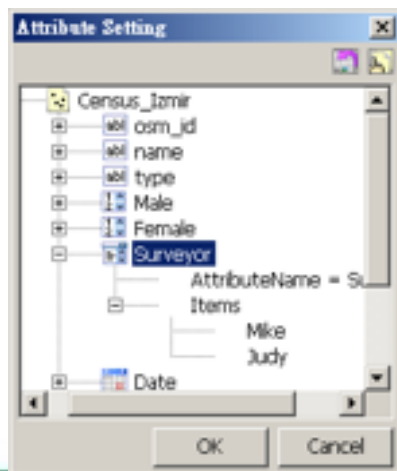
# Census Survey

A census survey is the important recording information of a nation. The term is regularly connected to national population and housing.



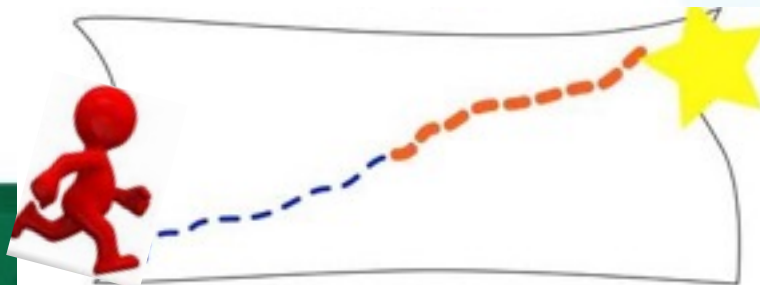
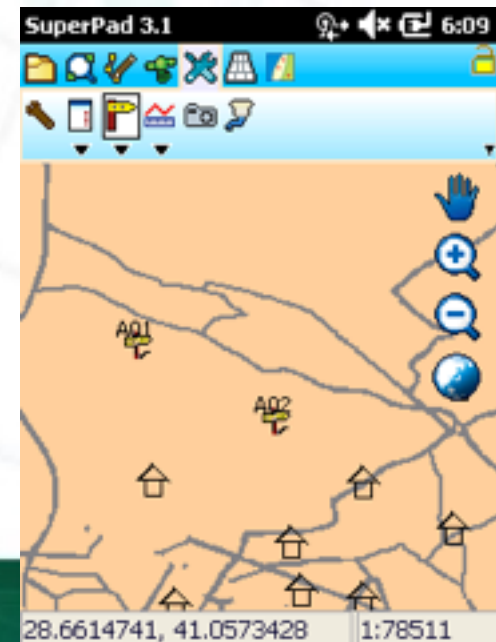
# Before surveying

- **Advanced attribute editing** extension can make the data collection more easier.
  - Create a custom form
    - ✓ Determine the attribute type
      - Menu, GPS, Time...etc
  - Deploy this table to field workers.



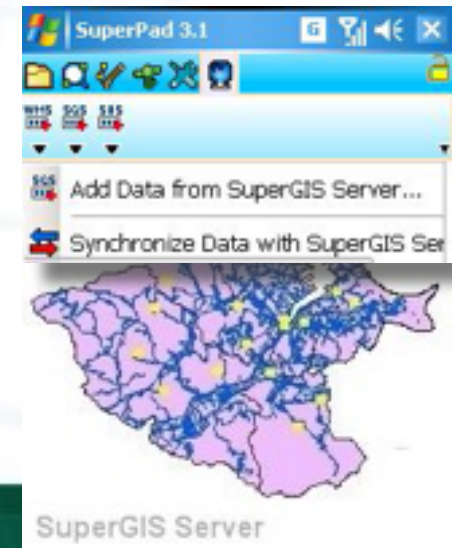
# In the field...

- Take a photo
  - Record photo's path in the attribute table by advanced editing
- Track log
  - Avoiding repeated tracks
  - Saved as .kml, .geo or .shp
- Waypoint
  - **GPS Navigation** guides to your destination



# Synchronization with GIS Server

- Bring you data to the field
  - Publish map layers to SuperGIS Server
- Edit and real-time data synchronization
  - Activate **DataServicesToolbar add-on**
  - Connect to SuperGIS Server and reach the layers for editing
  - Synchronize data to SuperGIS Server



---

# Demonstration



---

# GIS Software Development Team On Demand





# Why Supergeo

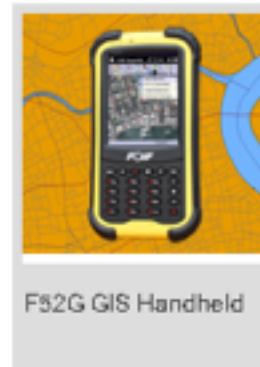
---

- Experienced software development team for cross-platform GIS
- Flexible OS choosing from Windows, Win Mobile, Android, iOS
- Effective budget allocation for human resource per your demand
- **Value-added** solution for your hardware products



# Success Story

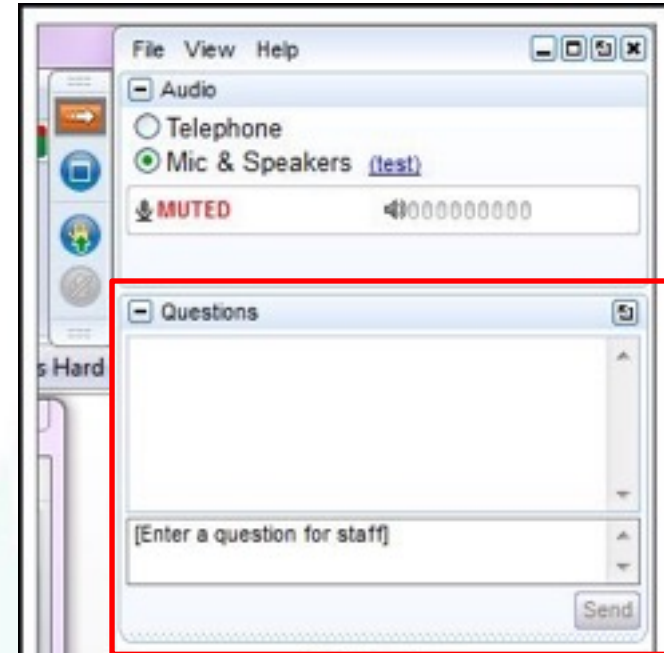
- Windows Mobile NTRIP solution for FOIF, China



- Mapping for iOS with GPS PL, Poland



# Q&A Time



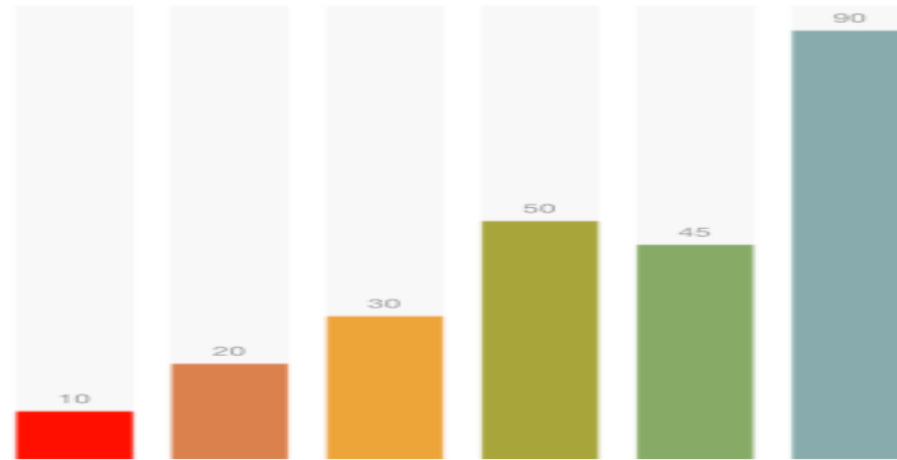
**Subscribe** to get latest Online Training Resources

<http://www.supergeotek.com>

[staff@supergeotek.com](mailto:staff@supergeotek.com)





## BREAKTIME: QUICK POLL



SupergeoTV



# Upcoming Event



INSPIRE - Infrastructure for Spatial Information in Europe

**GEOSPATIAL  
WORLD  
FORUM**

25-29 MAY 2015  
LISBON CONGRESS CENTER, PORTUGAL

THEME **CONVERGENCE**  
POLICIES PRACTICES PROCESSES  
PUBLIC PRIVATE PARTNERSHIP

The banner features the INSPIRE logo on the left, the event title in the center, and a globe with a network overlay on the right. The globe is partially covered by a white box containing the "CONVERGENCE" theme logo, which includes three upward-pointing arrows in red, blue, and green.

Supergeo booth #41



